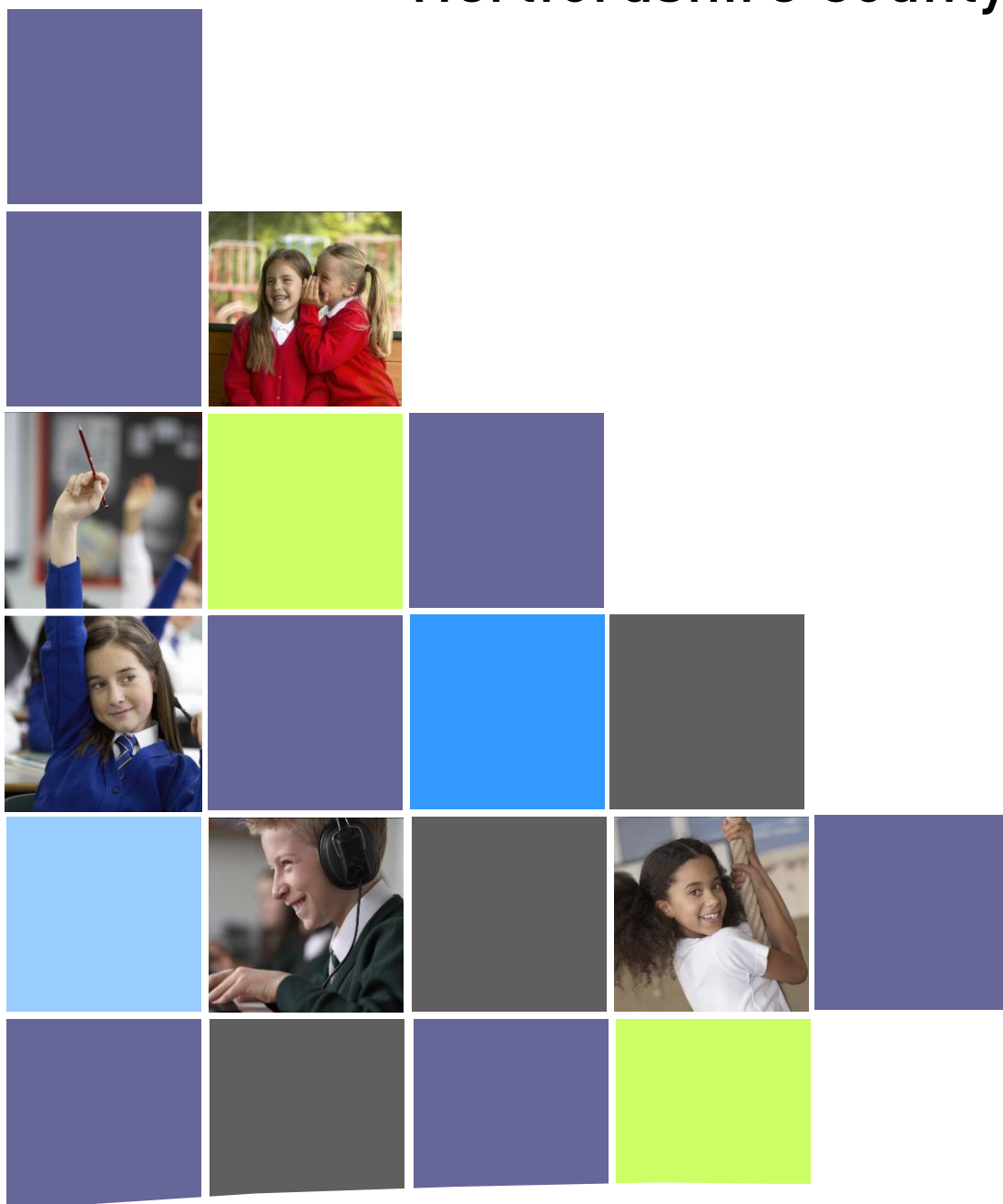


# Meeting the rising demand for school places

Hertfordshire County Council



[www.hertsdirect.org](http://www.hertsdirect.org)



<b>Contents</b>	<b>Page</b>
<b>1. INTRODUCTION</b>	<b>2</b>
<b>2. FUTURE DEMAND FOR SCHOOL PLACES</b> <ul style="list-style-type: none"> <li>- How our primary sector forecasts are prepared</li> <li>- How accurate are our forecasts?</li> <li>- What our forecasts show for the Primary Sector</li> <li>- Housing growth and increasing population</li> <li>- The national picture</li> </ul>	<b>4</b>
<b>3. STRATEGY TO MEET THE RISING DEMAND FOR PRIMARY SCHOOL PLACES</b> <ul style="list-style-type: none"> <li>- How decisions are made</li> <li>- Delivery of the programme</li> </ul>	<b>8</b>
<b>4. RISING ROLLS IN THE SECONDARY SECTOR</b>	<b>11</b>
<b>5. WIDER OBJECTIVES OF SCHOOL EXPANSIONS</b> <ul style="list-style-type: none"> <li>- Diversity, choice and responsiveness to parents</li> <li>- Provision of suitable surplus of places to allow choice and guard against unexpected changes</li> <li>- Improving attainment and improving buildings</li> <li>- Special Educational Needs (SEN)</li> <li>- Provision for the wider community, inside and outside of school</li> <li>- Early years provision</li> <li>- Cost effectiveness and value for money</li> <li>- Environment and sustainability</li> <li>- ICT</li> </ul>	<b>12</b>
<b>6. TIMETABLE</b>	<b>16</b>
<b>7. PRIMARY PLANNING AREAS</b>	<b>17</b>
<b>8. SECONDARY PLANNING AREAS</b>	<b>30</b>

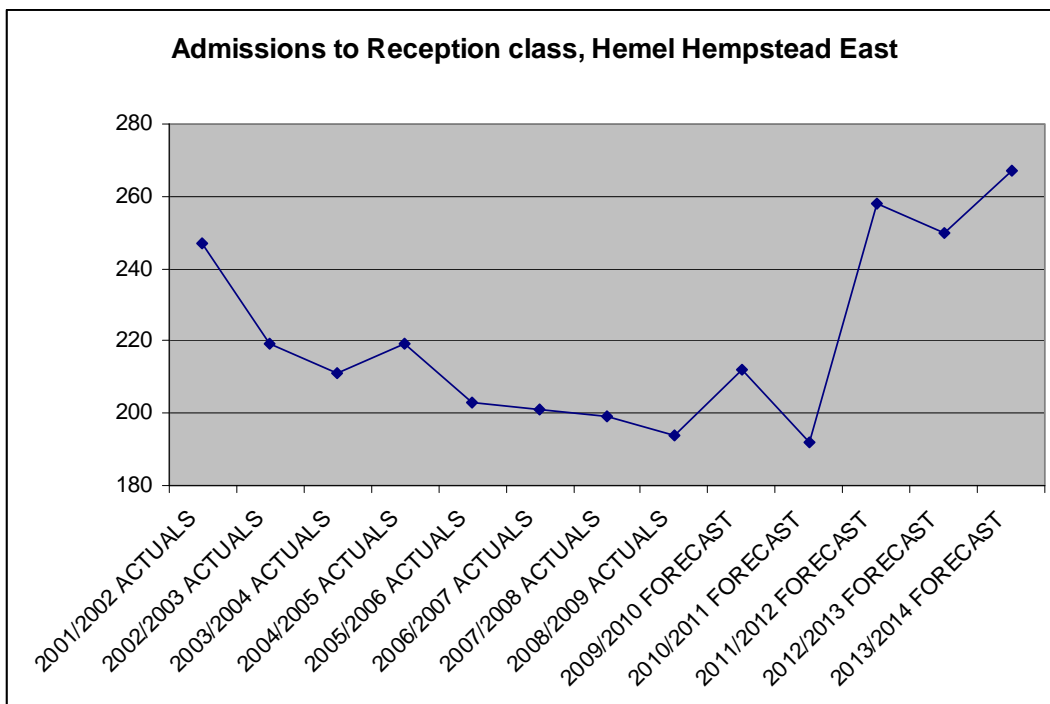
## 1. INTRODUCTION

One of the most challenging roles for a local authority is to ensure that there is always sufficient and suitable education provision for all of its children and young people.

Hertfordshire has a good record meeting this challenge – actively planning school places and changing the supply in line with forecast demand. The planning cycle – the process of forecasting, review and change - is a continual one.

In line with national trends, Hertfordshire experienced a period of falling demand for primary school places between 2000 and 2007 during which this county and many other authorities reduced provision in line with Audit Commission guidance. Hertfordshire has actively managed this process to ensure that schools are best placed to maintain standards. Places and sometimes schools have been removed, where this has been necessary to protect standards and the quality of education, but some school sites and buildings have been retained to facilitate the council's response to future changes in demand.

The national and local situation has now changed. Demand for places has increased and will increase further. We forecast that demand for Reception places will rise by 8% county-wide over the next three years. This growth is not consistent across the county and in individual local areas changes can be rapid, substantial and unpredictable. An example of this volatility in actual and forecast demand over just a short period of years is apparent in the Hemel Hempstead East area, as the graph below illustrates. It is an immensely complex challenge to develop plans in response to such rapid changes in demographics.



Making changes to provision in time to meet growing demand for Reception places is extremely challenging in circumstances where:

- information about numbers of children born can be received up to 9 months after the event and children can move into primary planning areas at any time before Reception age
- forecasts then need to be prepared taking into account how many of those children may be expected to want a place in a maintained school
- analysis needs to take place of where places can be added, if necessary
- even a simple expansion proposal can take 8 or 9 months after that if it requires statutory consultation of parents and schools - longer if additional accommodation is required. If a new school is needed, requiring a “school competition”, a much longer lead-in time is required, especially if a new site has to be identified and acquired
- and lastly, two years or so can be required to design and construct permanent expansions to buildings if these are required.

But as well as simply meeting demand for places the county council must also support and raise educational standards and never lose sight of the goal to improve outcomes for all children and young people. School places and standards cannot be considered in isolation. New and additional provision opens the opportunities to make schools better environments in which to learn, to expand successful schools, and to make them more accessible to more parents and pupils.

This document sets out Hertfordshire’s strategy for meeting the challenge of planning for rising rolls, explains the action which has been taken to date, and the broad approach the County Council intends to take in the future. It concentrates in particular on primary place planning, where the time available to respond to changes in demand is most limited. Sections are also included on the longer-term challenges in the secondary sector.

## **2. FUTURE DEMAND FOR SCHOOL PLACES**

### ***How our primary sector forecasts are prepared***

Local forecasts of demand for school places – as opposed to population as a whole – are prepared using a software system, to anticipate shortfall or surplus of places by area. Pupil numbers are forecast taking into account:

- historic pupil numbers in each school year group
- 0-5 year olds registered with general practitioners for primary.
- primary pupils moving on to secondary schools
- mobility trends and any new housing developments
- migration to and from other authorities and the independent sector.

Primary forecasts are based largely on the actual numbers of children aged 0-5 registered with GPs. We have recently been able to obtain this data from the NHS twice-yearly in order to be more sensitive to any changes, whereas previously it was only available annually.

The data which the NHS is able to make available to us includes date of birth and postcode, but offers no insight into other factors (such as age of mother, immigration etc.). The information is used, together with children from projected housing developments, to forecast the number of primary school places likely to be required. Secondary-age forecasts use actual and forecast numbers of pupils in primary schools.

The council's school rolls projections are verified in a number of ways, the most important being comparison with our overall population forecasts which are based on 2001 census data and a range of other demographic information.

### ***How accurate are our forecasts?***

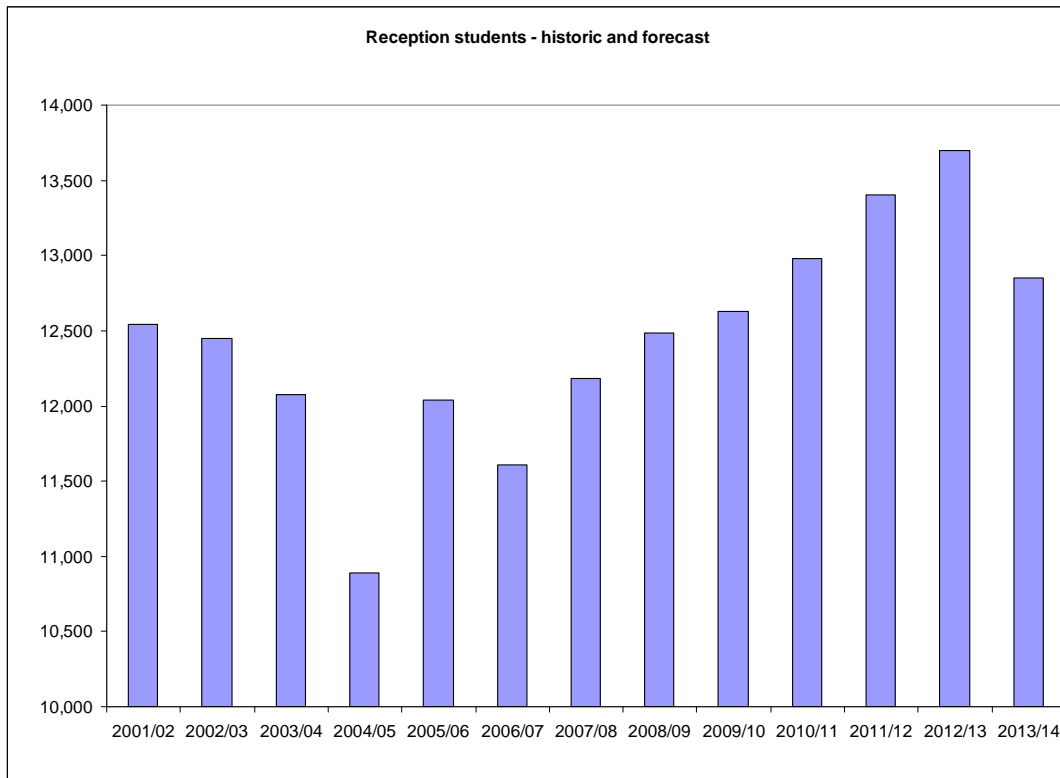
However good the forecasting methodology, it is inevitable that forecasts in some areas will change over time. The smaller the forecasting area, the greater the random changes over time in fertility and numbers of births. At a local level, the composition of communities can change rapidly with in and out migration or as stable communities age and then new generations of young people move in. Conversely, very low levels of turnover in the housing market to some degree freeze existing patterns of population. In recent years there has been a very marked reduction in mobility due to reduced numbers of house sales.

Forecasts one year ahead are generally accurate. But inevitably, the further into the future the forecasts look, the less their accuracy especially at a very local level. For these reasons it is essential continually to review

proposals for additional places to make sure they are best-tailored to meet the changing forecast of demand.

### ***What our forecasts show for the Primary Sector***

At a county-wide level, 2009/10 is the third year of growth in reception class numbers. This increase is expected to continue to 2012/13, as set out in the graph below. However, our most recent forecasts suggest that this trend is likely to come to an end in 2013/14 county-wide, though continue in some local areas.



This implies that reception numbers will fall in 2013/14 after 7 years of continuous growth. However, it is impossible to tell with any degree of certainty yet whether or not numbers will rebound the following year (as happened in 2005/06) or whether this will be the start of a period of decline. This depends on how many children are born in the current year (2009/2010) and what the patterns of in and outward migration are over the next 5 years. Neither of these factors is stable and precisely predictable. Actual numbers depend on the sum of a large number of individuals' decisions about when to have families and where to live, and consequently are inherently unpredictable.

At a local level our forecasts still show continuing growth in 2013/14 in a number of areas, and further in this strategy specific proposals are identified against local area changes.

The policy implications of the inevitability of year-to-year fluctuations in numbers of births are that we need to ensure that proposals for permanent

expansions of schools are robust in the face of different outcomes for future births, and that temporary expansions are used to manage transitional problems or in areas where the future trend in demand for places is unclear. It is also essential that proposals are kept under continual review as they are developed, to ensure that events do not change in such a way as to make them inappropriate. A methodology for achieving this is set out in Section 3.

### ***Housing growth and increasing population***

Forecast growth in pupil numbers over the next few years, and especially at primary age, is based on children already born as well as an additional pupil yield from known new housing developments. In the medium term the county council will continue to plan very carefully with district councils where new school provision should be located, to meet the needs generated by further new housing developments. The scale of this will be determined by the future evolution of housing growth targets within each district.

Close working relationships exist between the county and districts and extensive work has gone into contributing to Local Development Frameworks.

Some capital funding for school expansions has been received through town planning agreements with housing developers and will be used to contribute to the cost of necessary expansions. An important challenge for the future is to try to ensure that new housing developments adequately contribute towards the costs of the consequent additional school places.

### ***The national picture***

What is happening in Hertfordshire is similar to the picture nationally where there has been a substantial increase in demand for school places, largely resulting from increasing numbers of births. Live births in England and Wales increased for the sixth successive year in 2007. There were 690,013 live births in 2007 compared with 669,601 in 2006, an increase of 3.0 per cent. The number of live births has been increasing since 2001 and has now reached the highest level since 1991.

This growth is not uniform and some areas are seeing changes in demographic and other factors which have resulted in a sharp increase in reception age pupil numbers in 2008. The government also projects further cumulative increases for at least the next few years based on historic growth in births.



The DCSF (Department for Children, Schools and Families) has acknowledged recently that the rate of growth in demand for primary pupils was not reasonably predictable in 2007 as “the birth rate in England reversed a long period of decline in 2001 and has shown growth in every year since.” Even projecting total population growth at national level is difficult. A recent Parliamentary Select Committee concluded that the “Government Actuary’s Department’s projections of net immigration, natural change and population growth involve a high degree of uncertainty”.



### 3. HERTFORDSHIRE'S STRATEGY TO MEET THE RISING DEMAND FOR PRIMARY SCHOOL PLACES

The county council has adopted a strategy of primary school expansions in response to these new and emerging needs in the ways set out below. A critically important aspect of this is the need to respond as rapidly and flexibly as possible to changes, but not to seek to add permanent additional capacity unless there are good grounds for believing it will be required in the medium to long term.

Our current plans include:

- **Provision of temporary places:** in the short term to cater for known or forecast increased demand. This allows for an assessment of the unfolding situation. If it is determined that more permanent provision will be required appropriate arrangements can be made.

So far seven forms of entry (f.e) – a total of 210 places have been created in this way:

- 3 f.e. in St. Albans
  - 3 f.e. in Watford
  - 1 f.e. in Borehamwood
- **Permanent expansion:** either following temporary provision or where it can be planned to be completed in time to meet demand. This would only be on existing school sites where a solution for a specific area has been agreed and where there is some certainty of longer term need.

The county council is currently planning to increase provision for school places by 5 forms of entry in the next two years, and has allocated funding for:

- Bernards Heath Infants School, St Albans – expand by 1 f.e.
  - Mandeville Primary School, St Albans - expand by 1 f.e
  - Wheatcroft Primary School, Hertford – expand by 0.5 f.e.
  - Green Lanes School, Hatfield – expand by 0.5 f.e.
  - Roselands School, North Hoddesdon – expand by 0.5 f.e.
  - Holywell Primary School, Watford – expand by 0.5 f.e.
  - Greenway, Berkhamstead – expand by 0.5 f.e
  - Cowley Hill, Borehamwood -- expand by 0.5 f.e
- **Strategic planning:** strategies are being developed in areas where sustained growth or demand is not clear or there are real constraints on school sites in the most appropriate areas. These strategies involve schools and parents. In some cases the district council is engaged where town planning policies may either restrict or enable development.

- **Capital cost of expansions**

The county council has invested heavily in school expansions over the last few years. Delivery of the programme described in this document will require further and higher levels of investment.

Set out later in this report is a detailed analysis of changes in demand, area by area, which underpins our assessment that a substantial programme of expansion of primary school places will be required by 2012/13 to 2013/14. This expansion will need to cover a large part of the county, and around 25 forms of entry of additional provision are likely to be required by 2013/14, together with various temporary expansions. In total this will mean 5000 or so additional school places, exclusive of nursery provision. Consideration of the financial issues raised by this forms part of the Council's Integrated Planning Process (IPP).

Currently, some limited sums of money are provided by Government in the form of capital grant, but there is no certainty round this after the end of 2010/11. Some housing developers' contributions are also available. However, paying for the necessary investment programme will be demanding. Where possible, the council will continue to identify and sell surplus assets to release capital receipts for re-investment. Other investment proposals will continue to be closely scrutinised. But if it was assumed that a programme of this size cost in the region of £95m and was met solely from the Council Tax, then the consequences would be in the order of a 19 percent increase in the Council Tax for one year only if met by a once-off contribution, or one and a half percent annually if met by borrowing. The money would need to come from the Council Tax and/or reductions in budgets elsewhere and not from the schools budget (the Dedicated Schools Grant) as the DSG cannot be used for this purpose.

The cost of the likely expansion of secondary school provision is currently being assessed.

### ***How decisions are made***

Each year decisions have to be taken about whether, where and when additional school places need to be made available.

The national framework for planning school places, and the arrangements for admitting children to them, means that decisions need to be taken more than a year in advance. The county council is the admitting authority for all community and voluntary controlled schools. It consults on proposed admission numbers (PANs) in January of each year and makes its final decisions in March taking into account the response it receives.

Decisions on the number of places available for the academic years 2009/10 and 2010/11 have already been made. PANs for 2011/12 are currently being proposed for consultation in January 2010 and those for 2012/13 will go through the same process a year later.



In some circumstances, the national legal framework also requires further consultation for individual schools (for instance on the expansion of premises, which almost every permanent expansion and some temporary expansions would require). This consultation process is more local and more intensive than that round PAN setting. The various steps are prescribed by Government, and it is not easy to complete in less than 8 months. Beyond that, if it is proposed to establish a new school, then generally a “school competition” is also required by Government to determine who will operate the school. This has its own requirements and timescale, meaning that the process of agreeing to create a

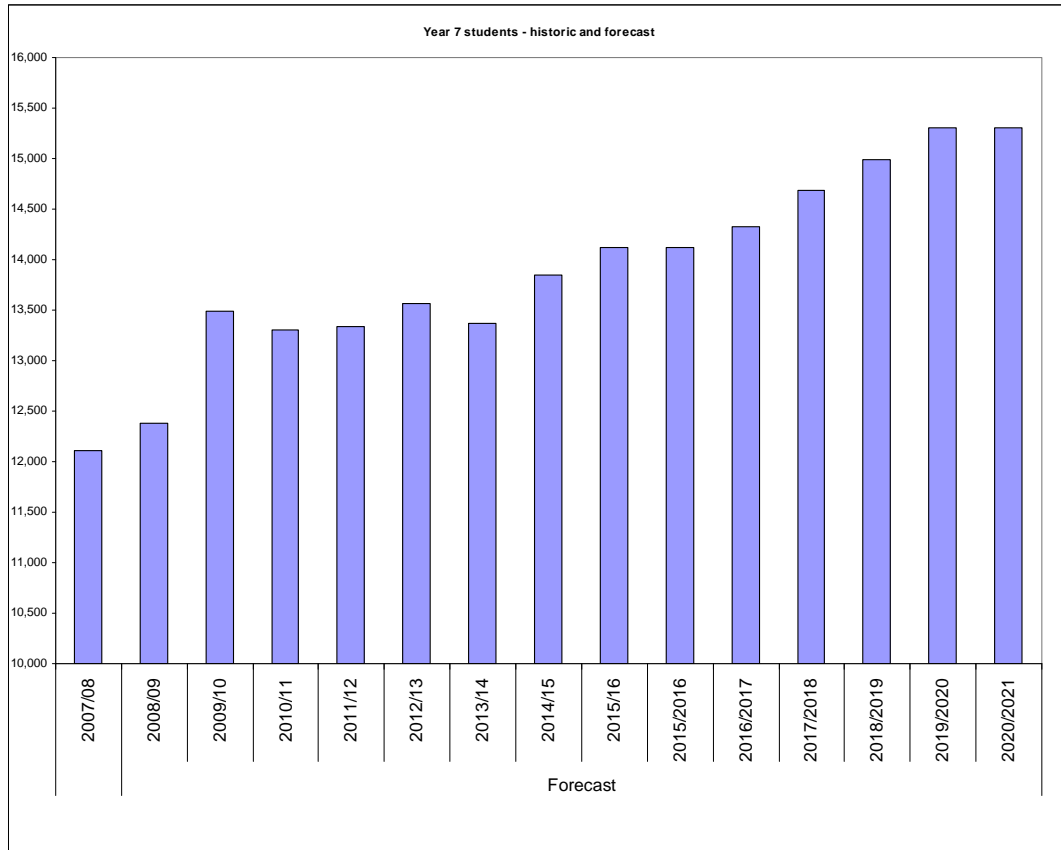
new school to meet growing demand is very lengthy, even setting aside the process of finding a site and design and construction.

### ***Delivery of the programme***

A project board will be set up consisting of a wide range of stakeholders. Their remit will be to oversee development and delivery of the planned expansion strategy and report back appropriately.

#### 4. **RISING ROLLS IN THE SECONDARY SECTOR**

Inevitably, after a time-lag rising rolls in primary schools translate to rising rolls in secondary. Set out below is a graph presenting most recent projections, showing 2014/15 as the start of a likely long period of sustained growth.



These projections run up to 2020/21 – the last year where Year 7 pupil numbers comprise children already born. The pattern of growth over time is more consistent than in the primary sector, because over the longer time period the effects of growing dwelling numbers have a proportionately greater effect. Because of the greater degree of predictability of secondary age pupil numbers five or more years in advance, the planning of expansions to meet demand is a more certain process.

## **5. WIDER OBJECTIVES OF SCHOOL EXPANSIONS**

When making proposals for new and expanded schools, the main aim that must be achieved is to provide an adequate number of places. However, new building programmes offer the opportunity to make improvements in the range, quality and value for money of our school provision in a whole variety of ways. They can also contribute to the Council's other wider policy objectives as set out in the Corporate Plan

Set out below are the objectives or principles which will guide the Council's expansion proposals so as to maximise their benefit.

### ***Diversity, choice and responsiveness to parents***

Expansions provide an opportunity for making the school system more responsive to what parents want. Within Hertfordshire there is a wide range of different schools at primary and secondary level, including faith schools, trust schools and partially selective schools. The independent sector also forms an important part of this provision. All secondary schools are encouraged to develop specialisms. In autumn 2009, the Council established two new Academies.

Where new schools are being set up, the Government generally requires the use of "school competitions" to establish who might be the best provider, although there are some limited exceptions to this.

### ***Provision of suitable surplus of places to allow choice and guard against unexpected changes***

In ideal circumstances, the county council works to the Audit Commission's recommendation that where possible that the surplus of school places should be no more than 10% in a local area. Where there is surplus capacity expected over a long time period, we look to reduce it.

Over many years the council has sought to avoid having substantial excess schools capacity in any area. This has sometimes involved the closure of schools which are relatively unpopular and where the capacity in them is not required. Such closures are desirable partly because of the costs entailed in maintaining high levels of surplus but more importantly because of the adverse educational consequences on children of operating schools which are relatively unpopular and have too few pupils for the buildings they occupy. Because demand does change quite substantially over a long period of time in individual areas, there are occasions where schools are closed due to surplus capacity, but that after an elapse of time additional new capacity is required and new ones (or ones in the same buildings) re-open.

One purpose of aiming for some surplus is to provide greater parental choice, although of course some schools will always be more popular than

other and consequently over-subscribed. Surpluses generally collect in a small number of schools with most others full. Another benefit lies in guarding against the inevitable volatility of numbers of places demanded from year to year. However, the target is not rigid and needs to vary to reflect both what is expected over several years on average, and also what is practicable and affordable. The proposals later in this report reflect a minimum manageable level of provision.

### ***Improving attainment and improving buildings***

New and expanded school buildings provide the opportunity to improve the environment within which teaching and learning takes place, both for primary and secondary aged pupils. Through our expansions we aim to introduce new and improved ICT (as described elsewhere) and update and upgrade common facilities such as halls, dining areas and kitchens if additional numbers mean that existing facilities are inadequate.

We also plan to explore what primary schools of the future might look like, and whether they could or should include more of the specialist facilities universal in secondary schools. In ideal circumstances, primary schools would all have site sizes meeting current government standards. However, we recognise that this will not always be practicable and we will need to consider whether sites should be more compact and buildings constructed on more than one storey, particularly in more-densely populated urban environments

In the short term, it is inevitable that some additional provision will come in the form of temporary accommodation. This is an appropriate solution to short-lived peaks in demand. However, where we believe growth in demand will be sustained we aim to make permanent provision.

Generally, we will also seek where possible to expand successful, high-attaining schools

### ***Special Educational Needs (SEN)***

Hertfordshire's strategy for SEN and inclusion and the associated review and development work aim to build on existing good practice and to educate more children locally. We want to widen the choices available to parents who would like the chance for their children to attend properly resourced and equipped mainstream schools, without any compromise to the position of the existing valuable network of special schools.

### ***Provision for the wider community, inside and outside of school***

Children's centres and extended schools will have important roles within communities, providing links to adult and family learning and supporting the development of the local economy through work with partners such as job centre plus. They will also be part of the provision of 'things to do and

places to go' for young people, as well as providing leisure, cultural and other amenities for the wider community

Expanding schools and building new ones provides an opportunity to build in this type of provision from the start. At secondary level, making sports and leisure provision easily accessible to the wider community will be an important theme in all new school buildings, in partnership with district councils.

Schools are becoming increasingly important as a base for specialist services, provided in an integrated way from a range of professional backgrounds. Integrated services have a contribution to make to achieving better outcomes for children in the provision of a range of targeted services, easily accessible locally, and providing swift and easy referral to more specialist services when required.

### ***Early years provision***

Nursery classes and foundation stage provision is now a core part of any new and extended school. But we will need to explore what is required in new schools to support and facilitate the provision of wrap-around child care, before and after school, in holidays and for three and four year olds. This does not necessarily mean expensive building work, but does require careful thought and good design.

### ***Cost effectiveness and value for money***

The county council believes secondary schools of at least six forms of entry offer the best educational provision for secondary-aged pupils, as well as being large enough to be reasonably cost-effective.

For primary schools, the ideal size is two forms of entry – 60 pupils in each year group – where this is possible. Schools of this size work well educationally and also provide better value for money than smaller schools. Of course, larger and smaller schools also work well with appropriate management. The money available to the county council for schools' budgets is fixed in total each year and we have an obligation to seek to use it efficiently, bearing in mind that more spent in one school means less in another.

Sometimes there are reasons why smaller schools are necessary in terms of the size of local communities to be served, and the council is committed to the retention of a network of rural primary schools. Schools play a particularly important role in the lives of small rural communities. But in urban areas where possible in expanding provision we will seek to move towards two-form entry schools.

## ***Environment and sustainability***

New provision provides an opportunity to make radical improvements in energy efficiency and carbon reduction. Wholly new-built schools will be built to score at least 'Very Good' on the Building Research Establishment Environmental Assessment methodology (BREEM) for assessing environmental performance. These new schools will also generally be 'Low Carbon' as defined by the DCSF.

However, if accommodation is not required in the longer term, the most sustainable approach may well be to use temporary buildings, because of the level of embedded carbon entailed in new permanent constructions.

## ***ICT***

New buildings and extensions will allow the opportunity to ensure that ICT infrastructure and provision will support what children and young people need in the future. Work is being undertaken to assess those needs so that schools' provision can be checked and enhanced to ensure they meet those requirements.



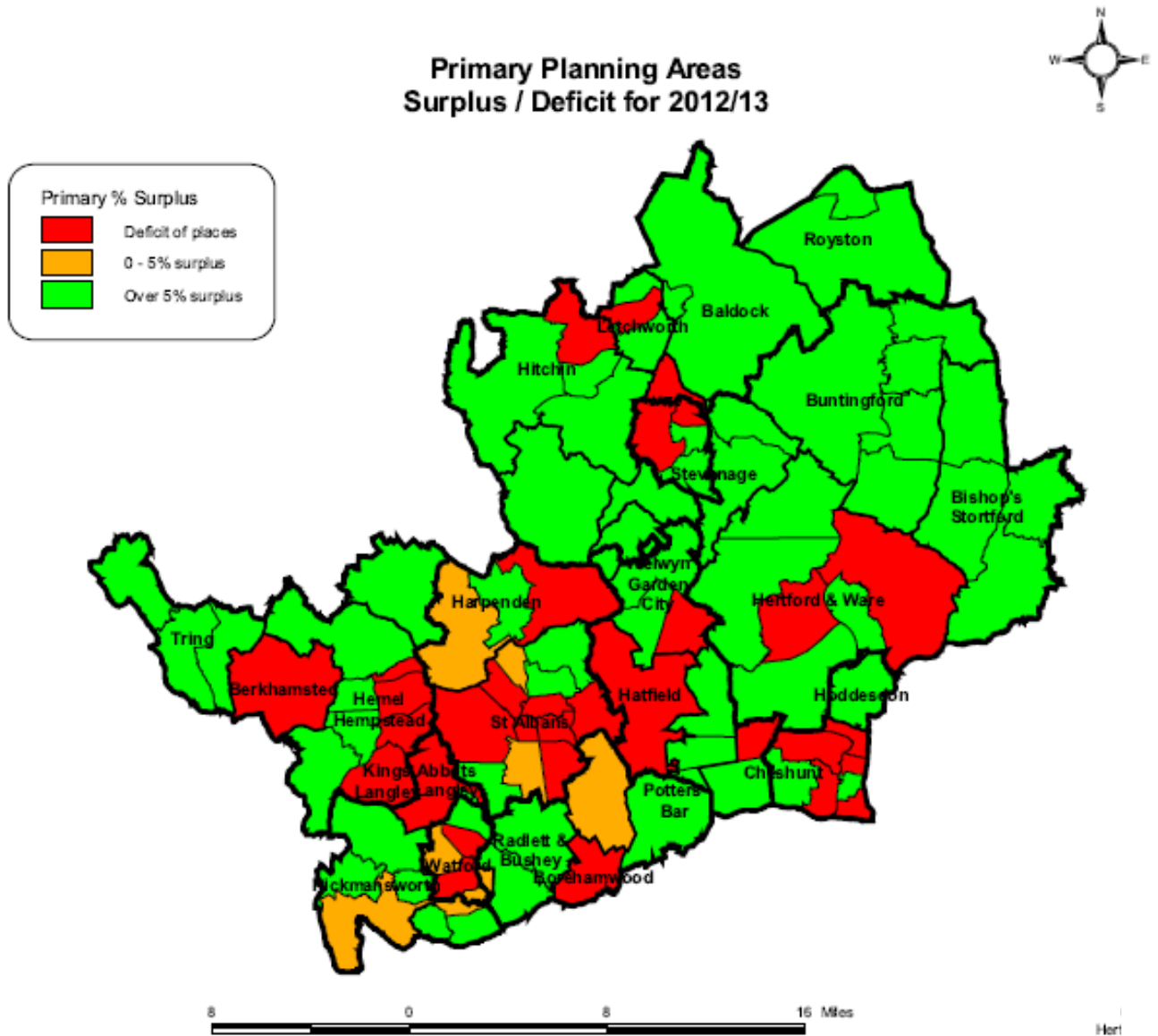
## 6. TIMETABLE

Date	Proposed activity
December 2009	Published Admission Numbers (PANs) for 2011 proposed by Cabinet
January 2010	Admissions consultation on 2010 PANs with schools and wider stakeholders
March 2010	PANs for 2011 determined by Council
March 2011	PANs for 2012 determined by Council
March 2011	Building contracts for 2012 projects let
September 2012	New permanent school accommodation opened. Mobiles removed.
September 2013	New permanent school accommodation opened. Mobiles removed.

The next two sections identify in map format the forecast position of primary and secondary school places across the county for 2013/14, using a traffic light system which is explained in the key to the maps. The sections then each explain for areas where a shortage is identified (coloured red) what the forecast is for a number of years, what we have done so far in those areas, and what the strategy for future places is.

## 7. PRIMARY PLANNING AREAS

The map shows the county-wide picture for primary school place surplus and deficits.



More details on the local areas which are forecast to have a shortage of school places in 2012/13 are set out below.

### ***Abbots Langley***

**Total number of reception places currently available =195**

Forecast	2010/11	2011/12	2012/13	2013/14
<b>% surplus/ shortage</b>	<b>-4.1%</b>	<b>-1.0%</b>	<b>-12.8%</b>	<b>-13.3%</b>
<b>Demand</b>	203	197	220	221

A shortage of places is forecast for Abbots Langley. This increases to approximately 1 f.e. (30 places) from 2012-13

#### **Action taken**

2006: Tanners Wood Primary School's PAN (Published Admission Number) reduced from 56 to 45 in line with forecasts at that time which did not indicate a need for the places. The new PAN ensured that the school could manage class sizes efficiently and within Key Stage 1 legislation.

2009/11: The school attracts pupils from a wide area, where there are sufficient places available to manage the forecast demand up to 2012/13 and so no change has been proposed to date.

#### **Next steps**

2012/13 onward:

The forecast of demand increases by over 10% from 2012/13.

- Tanners Wood primary school is the only school with potential to expand, but by 0.5 f.e. (15 places) only, for which additional accommodation would be required.
- Forecasts will be monitored to establish whether additional capacity is required to meet demand for places from local children.

### ***Berkhamsted***

**Total number of reception places currently available = 252**

Forecast	2010/11	2011/12	2012/13	2013/14
<b>% surplus/ shortage</b>	<b>4.8%</b>	<b>4.4%</b>	<b>-8.7%</b>	<b>-10.3%</b>
<b>Demand</b>	240	241	274	278

A shortage of places is forecast for Berkhamsted from 2012/13. Approximately 1 f.e. (30 places) will be required.

### **Action taken**

2009: In line with the then forecast increase in demand the admission number at Greenway First School was increased from 45 to 60. A building project is currently underway.

### **Next steps**

2012/13 onward: Since then, the forecast of demand has risen and a further 1 f.e. will be required in the area from 2012-13. Feasibility work is being undertaken to establish a suitable solution as school site capacity is very limited in the town.

## ***Borehamwood***

**Total number of reception places currently available = 360**

<b>Forecast</b>	<b>2010/11</b>	<b>2011/12</b>	<b>2012/13</b>	<b>2013/14</b>
<b>% surplus/ shortage</b>	<b>1.9%</b>	<b>-10.0%</b>	<b>-1.1%</b>	<b>-1.4%</b>
<b>Demand</b>	<b>353</b>	<b>396</b>	<b>364</b>	<b>365</b>

A shortage of places is forecast from 2011/12.

### **Action taken**

The County Council has responded to a rising demand for places in Borehamwood.

2009: Cowley Hill Primary School's PAN was increased from 45 to 60 from September 2009 in line with the forecast increase in demand at the time.

2010: Summerswood Primary School's PAN was increased from 30 to 60, to respond to the forecast demand at the time. Two modular classrooms will be provided on the school site to accommodate the additional pupils.

2011-12: The county council is consulting on a proposal that the admission number at Summerswood Primary should remain 60 for 2011-12. Should excess demand materialise it will be managed locally.

### **Next steps:**

2012-13 onward: Forecasts will be monitored to evaluate whether demand is likely to be sustained and to ensure the appropriate number of places are available to meet future demand.

## ***Flamstead End and Newgate Street***

**Total number of reception places currently available = 100**

Forecast	2010/11	2011/12	2012/13	2013/14
% surplus/shortage	-2.0%	4.0%	-9.0%	8.0%
Demand	102	96	109	92

A shortage of places is forecast in 2010/11 and again 2012/13 only.

### **Action to date**

2010/11: Ponsbourne St Mary's school PAN was increased from 10 to 12.

2011/12: There is forecast to be sufficient places to meet demand for 2011/12

### **Next Steps**

2012/13: The County Council will continue to monitor forecasts to ensure the appropriate number of places to meet future demand.

## ***Hatfield***

**Total number of reception places currently available = 360**

Forecast	2010/11	2011/12	2012/13	2013/14
% surplus/ shortage	-8.6%	-10.6%	-31.9%	-35.3%
Demand	391	398	475	487

A shortage of places is forecast for 2011/12 of around 1.5fe (45 places) and a further 2.5 f.e. (75 places) from 2012/13. Hatfield is one of the areas of the county where the demand for places has changed.

### **Action Taken**

2006: A review of primary places in the area was undertaken to address levels of surplus places. Decisions were taken to rationalise the pattern of schools and places available to meet the forecast demand at that time.

2007: Implementation of review outcomes:

- Stream Woods and New Briars Primary Schools were amalgamated to create a new 1fe primary school (Oak View) on the former Stream Woods site. This site has capacity and building for 2FE and provides the potential for future expansion.. The former New Briars school site has been retained also for future service need.

2010: Green Lanes Primary School's PAN is to increase from 45 to 60 to meet a growing demand from the housing area immediately surrounding the school. Funding has been allocated within the County Council's capital programme for permanent buildings to support the new size of the school. Should additional capacity be identified following receipt of primary applications for 2010/11, agreements will be made locally with schools in the area to ensure sufficient places are available to meet this need.

2011/12: To respond to the growing change in demand the County Council is consulting on a proposal to increase the admission number at Oak View Primary school from 30 to 60.

### **Next Steps**

2012/13 onwards: A further 2.5fe may be required based on the current forecast.

Feasibility work is required to identify the most appropriate options for expanding capacity in the town.

### ***Hemel Hempstead***

**Total number of reception places currently available = 1,040**

Forecast	2010/11	2011/12	2012/13	2013/14
% surplus/ shortage	9.3%	-0.9%	-1.2%	-0.9%
Demand	943	1,049	1,052	1,049

A shortage of reception places is forecast for Hemel Hempstead from 2011/12. This pressure is concentrated in the eastern side of the town. Hemel Hempstead is an area where the forecast of demand has changed significantly in some parts of the town.

### **Action Taken**

2006: A review of primary places in the area was undertaken to address levels of surplus places at that time, and forecast to continue. It was decided to rationalise provision and to reduce the number of places available by 3 f.e.(90 places).

2008: Implementation of review outcomes, involving:

- The amalgamation of schools (Barncroft /Eastbrook; Jupiter Drive/ Bellgate; Martindale/Rossgate) to create three new primary schools: Maple Grove (1 f.e.) on the former Eastbrook site ,Yewtree (2 f.e.) on the former Bellgate site, and Galley Hill (1.5 f.e.) on the former Rossgate site

The former Barncroft, Jupiter Drive, and Martindale sites are available to respond to future service need.

2011/12: To respond to the change in demand the County Council is consulting on the following proposals:

- Hammond Primary School's PAN to increase from 30 to 60, initially on a temporary basis.
- Tudor Primary School's PAN to increase from 30 to 60, initially on a temporary basis.

### Next Steps

2012/13: Feasibility work is required to consider the pattern of provision to meet forecast demand. There are several options available as to how this could be achieved which include the permanent expansion of existing schools or considering the reuse of former school sites which are currently unoccupied.

## *Hertford Town*

**Total number of reception places currently available = 315**

Forecast	2010/11	2011/12	2012/13	2013/14
% surplus/ shortage	0.6%	-6.3%	-20.6%	-20.0%
Demand	313	335	380	378

A shortage of places is forecast for Hertford town.

### Action Taken

2011/12: To respond to the change in demand the County Council is consulting on the following proposal:

- Wheatcroft Primary School PAN to increase from 45 to 60. The County Council has already allocated funds from the capital programme for a permanent building expansion.

### Next Steps

2012/13 onwards: An additional 2 f.e. (60 places) is forecast to be required from 2012/13. Feasibility work is being carried out to identify the most appropriate options for increasing capacity in the town.

## *Hitchin Town*

**Total number of reception places currently available = 406**

Forecast	2010/11	2011/12	2012/13	2013/14
% surplus/shortage	4.2%	-10.1%	-1.0%	-2.7%
Demand	389	447	410	417

A shortage of places is forecast for the town. An additional 1.f.e. (30 places) will be needed by 2012/13.

### Action Taken

2007: A review of primary places in Hitchin was carried out to address levels of surplus places which, at that time and in line with the trend in falling rolls, were forecast to continue. It was decided to reduce the number of reception places available for 2009/10 by 42.

2009: Implementation of review outcomes:

- Strathmore Infants School PAN reduced from 90 to 60
- Highover JMI School PAN reduced from 42 to 30.

2011/12: To respond to the change in demand and to rationalise places to allow some schools to organise classes more efficiently the County Council is consulting on the following proposals:

- Strathmore Infants, to increase from 60 to 90 places
- Highover JMI, to increase from 30 to 45 places
- Mary Exton and Samuel Lucas to reduce from 34 to 30.

### Next Steps

2012/13 onwards: Forecasts will be monitored to evaluate whether the increased demand is likely to be sustained in the future and to ensure the appropriate number of places to meet future demand.

## *Hoddesdon & Wormley*

**Total number of reception places currently available = 446**

Forecast	2010/11	2011/12	2012/13	2013/14
% surplus/ shortage	-3.1%	-7.8%	-5.2%	-4.7%
Demand	460	481	469	467

A shortage of places is forecast for this area, based on current data. This is an area where surplus places were removed in parts of the town. Recent changes in school provision, in the centre of the town, may not be wholly reflected in the forecasts. There is now the potential need for an additional 1 f.e. in the north of the area.

### Action Taken

2006: a review of primary places in the area was carried out to address levels of surplus places. It was decided to rationalise the pattern of schools in the centre of the area.

2007/08: Implementation of review outcomes achieved a net reduction of just over 2FE across the area through:

- Closure of Ryelands & Ley Park Primary Schools
- Relocation of Wormley School and expansion to 2FE
- Expansion of Sheredes School to 2 f.e.

The former school sites have been retained in County Council ownership for future service need.

2010/11: Longlands Primary School PAN increased from 26 to 30.

2011/12: To respond to the demand in the north of the area the County Council is consulting on the following proposal:

- Roselands Primary School's PAN to increase from 30 to 45. The school is adjacent to an area of new housing. Land and funds are available from the developer to support the proposal, as is additional funding allocated from the County Council's capital programme.
- Should actual demand require an additional 0.5 f.e, local arrangements have been made with Forres School to increase to meet this need.

### Next Steps

2012/13 onwards: Continue to monitor updated data to ensure the appropriate numbers of places are available to meet future demand.

## *Kings Langley and Chipperfield*

**Total number of reception places currently available = 90**

Forecast	2010/11	2011/12	2012/13	2013/14
% surplus/ shortage	14.4%	5.6%	-10.0%	-12.2%
Demand	77	85	99	101

A shortage of places is forecast from 2012/13 in Kings Langley.

### Action Taken

None required

### Next Steps

2012/13 onward: Children are attracted to Kings Langley from a much wider geographical area. Forecasts will be monitored and further work is required to establish whether local children would be unable to obtain a school place if the number of school places is not increased from 2012/13.

## Letchworth

**Total number of reception places currently available = 371**

Forecast	2010/11	2011/12	2012/13	2013/14
% surplus/ shortage	8.6%	8.6%	9.4%	17.3%
Demand	339	339	336	307

One small area of Letchworth is shown on the map on page 17 as having a shortage of places. This is due to recent changes to school provision to reduce surplus places which have yet to be reflected in the forecast. Sufficient places are available to meet forecast demand.

### Action Taken

2006/7: A review of primary places in Letchworth was undertaken to address levels of surplus places.

2009: Implementation of review outcomes:

- Westbury and Lannock Primary Schools were closed (a reduction of 68 places).
- Radburn Primary School's PAN was reduced from 38 to 30.

As a result of the review, the level of surplus across the town currently falls within the Audit Commission's guidelines.

### Next Steps

Forecasts will be monitored to ensure the appropriate number of places to meet future demand.

## St Albans

**Total number of reception places currently available = 967**

Forecast	2010/11	2011/12	2012/13	2013/14
% surplus/ shortage	-6.7%	-2.6%	-15.6%	-13.9%
Demand	1,032	992	1,118	1,101

A growing shortage of places is forecast in the city, rising to 5 f.e. in 2012/13 with no surplus capacity. St. Albans is an area where significant and unpredictable rises in demand have been experienced and which have since been reflected in the forecast. The city is densely populated, and developed, presenting real challenges in finding suitable school sites to expand, or new sites to develop. Some short term measures have been necessary while longer term solutions can be found.

## Action taken

2007: Aboyne Lodge, St Peter's and Maple Primary Schools' PANs were increased by 30 places each for one year to meet a sudden increase in demand.

2008: Mandeville Primary and Bernards Heath Infant Schools' PANs were increased by 30 places each on a temporary basis.

2009: Mandeville Primary and Bernards Heath Infant Schools' PANs were sustained. A building project to provide permanent additional capacity at Bernards Heath Infant School is complete. Projects at the linked junior school and Mandeville Primary School to provide permanent additional accommodation are currently underway.

2010: Cunningham Hill Infant and Margaret Wix Primary Schools' PANs increased by 1 f.e. (30 places) each for one year.

2011/12: To continue to respond to the change in demand the County Council is consulting on sustaining the PAN at Margaret Wix.

## Next steps

2012/13 onward: Options for permanent expansion are limited. Feasibility work is required to ascertain the most appropriate long term solution for creating the required additional capacity in the town.

## Stevenage Town (North)

**Total number of reception places currently available = 643**

Forecast	2010/11	2011/12	2012/13	2013/14
% surplus/ shortage	3.1%	-12.3%	-12.6%	-12.0%
Demand	623	722	724	720

A shortage of places is forecast for the north of Stevenage Town of over 2.5 f.e. (75 reception places)

## Action Taken

2003:

- Round Diamond Primary School was relocated to the heart of the Great Ashby development and expanded to 2FE.
- Additional capacity was provided at The Leys Primary School.

2011/12 To respond to the change in demand the County Council is consulting on the following proposal:

- Martins Wood Primary School's PAN to increase from 60 to 90

Additional demand can be accommodated in spare places available towards the centre/south of the town.

### Next Steps

2012/13 Forecasts will be monitored to ensure the appropriate number of places are available to meet future demand.

## ***Waltham Cross***

**Total number of reception places currently available = 135**

Forecast	2010/11	2011/12	2012/13	2013/14
% surplus/ shortage	-25.2%	-14.8%	-38.5%	-26.7%
Demand	169	155	187	171

A shortage of places is forecast. There are places available in the adjacent Cheshunt East area that can meet some of the forecast demand. Taking this into account, an additional 1 f.e. is required to meet this demand.

### Action taken

2011/12: To respond to the change in demand the County Council is consulting on the following proposal:

- Hurst Drive Primary School's PAN to increase from 45 to 60
- Downfield Primary School's PAN to from 45 to 60.

### Next Steps

2012/13: A further 0.5 f.e. is required on a temporary basis, pending further data to support a sustained permanent need. Feasibility work is being undertaken to establish options to meet this demand.

## ***Ware Rural Villages***

**Total number of reception places currently available = 88**

Forecast	2010/11	2011/12	2012/13	2013/14
% surplus/ shortage	22.7%	29.5%	-2.3%	11.4%
Demand	68	62	90	78

A shortage of places is forecast for 2012/13 only. The extra demand for places is expected from the Stanstead Abbots area which also looks to the adjacent North Hoddesdon area.

## Action Taken

2011/12: see above for proposals for North Hoddesdon which is expected to provide sufficient capacity to meet a peak in demand from Stanstead Abbots.

## Next Steps

2012/13: Forecasts will be monitored to ensure an appropriate number of places are available to meet future demand.

## Watford Town

**Total number of reception places currently available = 960**

Forecast	2010/11	2011/12	2012/13	2013/14
% surplus/ shortage	-6.3%	-8.3%	-12.9%	-14.4%
Demand	1,020	1,040	1,084	1,098

A significant shortage of places is forecast in Watford, rising to 5 f.e. (150 places) with no surplus capacity in 2012-13. However, forecast demand is not evenly spread across the town with a significant concentration in central and mid Watford.

## Action taken

2003/2004: A review of primary places in the area was undertaken to address levels of surplus places, with decisions to rationalise school provision and reduce places by 3 f.e. (90 places) in the north of the town.

2005: Implementation of review outcomes:

- The amalgamation of schools (Alban Wood Infant and Junior; Garston Infant, Lea Farm Junior and Meriden Schools) to create 2 new schools: (Alban Wood Primary School (1 f.e) and Berrygrove Primary School (3 f.e.) on the former Garston Infant/Lea Farm Junior site).
- Reduction of the admission number at Leavesden Green from 60 to 30 places.

The outcome of the review has been successful and this pattern of school provision in north Watford is broadly in line with the forecast numbers for that part of the town.

2009/10: Holywell Primary School's PAN increased from 45 to 60 from September 2009 to meet a growing demand for places in west Watford. A building project is currently underway with funding provided from the county council's capital programme.

2010/11: PANs were increased by 30 places each at:

- Laurance Haines School, from 60 to 90
- Beechfield Primary School, from 30 to 60 and
- Cassiobury Infant school, from 60 to 90.

These schools are the closest to the area of greatest demand with sufficient site capacity to accommodate additional pupils. Temporary accommodation will be provided.

2011/12 To continue to respond to the change in demand the County Council is consulting on the following proposals:

- Laurance Haines and Cassiobury Infants Schools' PANs to remain at 90.
- Beechfield Primary Schools PAN to remain at 60
- Cherry Tree Primary School's PAN to increase from 30 to 60 places.

### **Next steps**

2012/13: Options for permanent expansion are limited. Feasibility work is required to ascertain the most appropriate long term solution for creating the required additional capacity in the town.

## ***Welwyn Garden City***

**Total number of reception places currently available = 585**

Forecast	2010/11	2011/12	2012/13	2013/14
% surplus/ shortage	-6.0%	-4.1%	-4.6%	1.0%
Demand	620	609	612	579

A shortage of places of 1 f.e.is forecast for 2011/12

### **Action taken**

2010/11: Arrangements have been agreed with schools locally to provide additional reception places for 2010/11 should the actual demand arise through the primary application process.

### **Next Steps**

2011/12

To respond to the change in demand the County Council is consulting on the following proposal:

- Creswick Primary School's PAN to increase from 30 to 60, initially on a temporary basis.

2012/13

Forecasts will be monitored to ensure there is an appropriate number of places to meet future demand.

### ***Wheathampstead***

**Total number of reception places currently available = 70**

Forecast	2010/11	2011/12	2012/13	2013/14
% surplus/ shortage	-5.7%	15.7%	-1.4%	4.3%
Demand	74	59	71	67

A small deficit of places is forecast from 2010-11, in some years.

#### **Action taken**

Historically any marginal additional demand has been managed locally.

#### **Next steps**

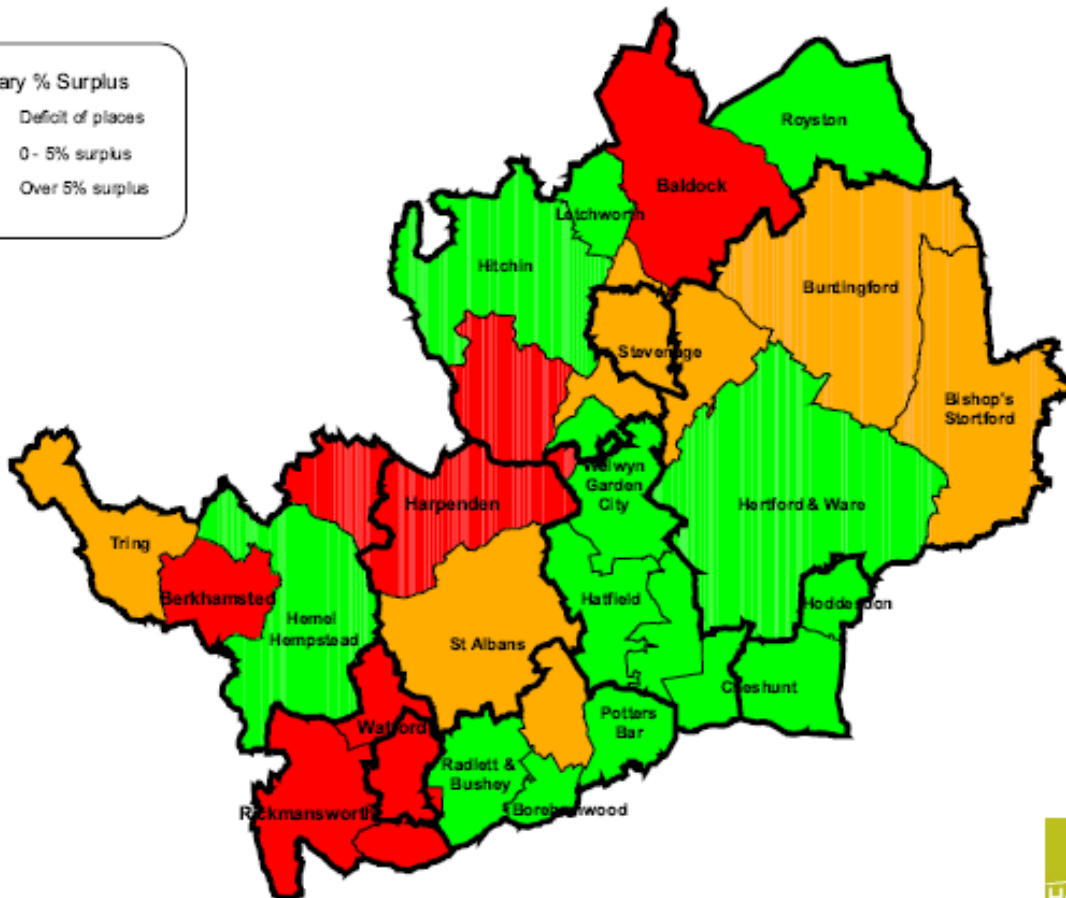
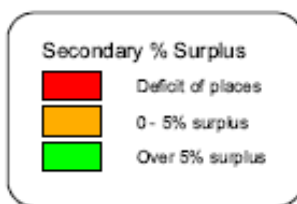
2012-13: The potential shortage of places will be managed through local arrangement with the two village schools.

## 8. SECONDARY PLANNING AREAS

The map shows the county-wide picture for secondary school place surplus and deficits.



**Secondary Planning Areas  
Surplus / Deficit for 2012/13**



Produced using ArcView by  
Hertfordshire County Council  
CSF Department

Mon, September 14, 2009

© Crown copyright. All rights reserved.  
Hertfordshire County Council, 100019606, 2009

More details on the local areas which are forecast to have a shortage of school places are set out below.

## **Baldock**

**Total number of Year 7 places currently available: 210**

<b>Forecast</b>	<b>2010/ 2011</b>	<b>2011/ 2012</b>	<b>2012/ 2013</b>	<b>2013/ 2014</b>	<b>2014/ 2015</b>	<b>2015/ 2016</b>	<b>2016/ 2017</b>	<b>2020/ 2021</b>
<b>% surplus/ shortage</b>	-5.71%	3.81%	-0.48%	-3.33%	-2.38%	-12.3%	-7.62%	-6.19%
<b>Demand</b>	222	202	211	217	215	236	226	223

A continued and sustained demand for places is forecast for Baldock, which cannot currently be met by the secondary school in this town.

However, considered along with schools in neighbouring Letchworth, there are sufficient places across the areas to meet demand in the short term. Additional capacity is required to meet fluctuations in demand from 2015/16.

### **Action to date**

Historically, any marginal unmet demand for places in Baldock has been locally managed on an annual basis. There have been places available also in neighbouring areas.

2011: Sufficient places in Baldock are forecast to meet the projected demand. Any marginal excess demand will be managed locally.

### **Next Steps**

2012/13 onwards: places will continue to be managed locally. There will be no spare places in neighbouring areas from 2015/16. Feasibility work is required to ascertain the most appropriate long term solution for creating additional capacity in the town.

## ***Berkhamsted Upper***

**Total number of Year 9 places currently available: 210**

<b>Forecast</b>	<b>2010/ 2011</b>	<b>2011/ 2012</b>	<b>2012/ 2013</b>	<b>2013/ 2014</b>	<b>2014/ 2015</b>	<b>2015/ 2016</b>	<b>2016/ 2017</b>	<b>2020/ 2021</b>
<b>% surplus/ shortage</b>	0.00%	10.95%	-1.90%	8.10%	-0.48%	1.90%	1.43%	-12.3%
<b>Demand</b>	210	187	214	193	211	206	207	236

A marginal shortage of places is forecast in 2012/13 and 2014/15. A larger shortage is forecast at the end of the forecast period.

### **Action taken**

None required to date.

2010/11: Places will be managed locally if required.

### **Next steps**

2012/13 onward: The admission number at the one upper school in the town will be negotiated on an annual basis to ensure that sufficient places are available.

## ***Berkhamsted Middle***

**Total number of Year 5 places currently available: 190**

<b>Forecast</b>	<b>2010/ 2011</b>	<b>2011/ 2012</b>	<b>2012/ 2013</b>	<b>2013/ 2014</b>	<b>2014/ 2015</b>	<b>2015/ 2016</b>	<b>2016/ 2017</b>	<b>2020/ 2021</b>
<b>% surplus/ shortage</b>	-12.6%	-8.42%	-7.89%	-20.5%	-4.2%	-12.1%	-13.1%	-27.3%
<b>Demand</b>	214	206	205	229	198	213	215	242

A shortage of places is forecast based on the current number of places available within the town.

### **Action taken**

The admission numbers for the two middle schools in the town have been negotiated on an annual basis, in line with pupil numbers in the local first schools.

2010/11: 210 places will be available in the town.

2011/12: 220 places have been proposed across the town.

### Next steps

2012/13 onward: Continue to negotiate places on an annual basis to ensure sufficient places are available to meet projected demand.

## *Bishops Stortford & Sawbridgeworth*

**Total number of Year 7 places currently available: 950**

Forecast	2010/ 2011	2011/ 2012	2012/ 2013	2013/ 2014	2014/ 2015	2015/ 2016	2016/ 2017	2020/ 2021
% surplus/ shortage	1.89%	0.95%	0.95%	-0.42%	-1.89%	-3.26%	-6.42%	-4.11%
Demand	932	941	941	954	968	981	1011	989

A shortage of places is forecast from 2013/14.

### Action to date

The current number of places available is the result of an ongoing strategy of providing additional places within the town. Two schools have been expanded to date: St. Mary's Roman Catholic School (by nearly 1 f.e.), and Birchwood High School (by 3 f.e.). Both schools have benefited from capital investment to provide the additional space required.

### Next Steps

The final phase of the strategy is being pursued by the two single-sex foundation schools, with the support of the County Council. They have proposed to relocate the two schools onto one site off Whittington Way, in Bishops Stortford. The relocation would provide new and expanded accommodation to meet the forecast demand for places and would provide flexibility to meet future demand.

## *Harpenden*

**Total number of Year 7 places currently available: 542**

Forecast	2010/ 2011	2011/ 2012	2012/ 2013	2013/ 2014	2014/ 2015	2015/ 2016	2016/ 2017	2020/ 2021
% surplus/ shortage	-2.58%	2.95%	-2.95%	-2.58%	-4.43%	-5.17%	-3.32%	-9.59%
Demand	556	526	558	556	566	570	560	594

A continuing shortage of places is forecast for Harpenden. Together with demand in St. Albans (see below) and allowing for some surplus capacity to meet parental preference, an additional 14 f.e. will be required up to 2021 across the two areas.

### Action to date

2006: Increase of the admission number at St George's from 130 (plus 20 boarding places).to 160 places (plus 20 boarding places).

2011/12: To improve access to village children the County Council is consulting upon the following proposed increases to schools' PANs:

- Roundwood Park from 182 to 196
- Sir John Lawes from 180 to 193

### Next Steps

2012/13: Feasibility work is required to ascertain the most appropriate long term solution to create the required additional capacity across Harpenden and St. Albans. This could be through the expansion of existing schools, establishing new provision, or a combination of both.

## *Rickmansworth*

**Total number of Year 7 places currently available: 603**

Forecast	2010/ 2011	2011/ 2012	2012/ 2013	2013/ 2014	2014/ 2015	2015/ 2016	2016/ 2017	2020/ 2021
<b>Predicted surplus</b>	-3.65%	-5.31%	-6.30%	-2.82%	-6.97%	-9.95%	-8.79%	-12.94%
<b>Predicted demand</b>	625	635	641	620	645	663	656	681

A shortage of places is forecast for Rickmansworth.

### Action taken

2007: Increase of the admission number at St Clement Danes from 178 to 208

There is a relationship for school places between Rickmansworth and Watford as parts of those areas are geographically close. See Watford below.

### Next steps

Feasibility work is required to ascertain the most appropriate long term solution to create the required additional capacity across Rickmansworth.

This could be through establishing new provision, the expansion of existing schools, or a combination of both.

## **St Albans**

**Total number of Year 7 places currently available: 1,579**

<b>Forecast</b>	<b>2010/ 2011</b>	<b>2011/ 2012</b>	<b>2012/ 2013</b>	<b>2013/ 2014</b>	<b>2014/ 2015</b>	<b>2015/ 2016</b>	<b>2016/ 2017</b>	<b>2020/ 2021</b>
<b>% surplus/ shortage</b>	3.99%	5.76%	4.56%	4.18%	-3.93%	-3.10%	-5.00%	-15.77%
<b>Demand</b>	1516	1488	1507	1513	1641	1628	1658	1828

A shortage of places is forecast from 2014.15. Together with demand in Harpenden (see above) and allowing for some surplus capacity to meet parental preference, an additional 14 f.e. (420 places) will be required up to 2021 across the two areas.

### **Action taken**

2011/12 – to align the admission number of a popular single sex school with its physical capacity, the County Council is consulting upon a proposal to increase of the admission number at:

- St Albans Girls' School from 178 to 196

### **Next steps**

2012/13: Feasibility work is required to ascertain the most appropriate long term solution to create the required additional capacity across St. Albans and Harpenden. This could be through the expansion of existing schools, establishing new provision, or a combination of both.

## **Stevenage**

**Total number of Year 7 places currently available: 1215**

<b>Forecast</b>	<b>2010/ 2011</b>	<b>2011/ 2012</b>	<b>2012/ 2013</b>	<b>2013/ 2014</b>	<b>2014/ 2015</b>	<b>2015/ 2016</b>	<b>2016/ 2017</b>	<b>2020/ 2021</b>
<b>% surplus/ shortage</b>	4.69%	-1.40%	1.15%	2.06%	-4.36%	-5.76%	-8.48%	-24.1%
<b>Demand</b>	1158	1232	1201	1190	1268	1285	1318	1509

Forecasts are showing a steady rise in demand in Stevenage secondary places at Year 7.

## Action to date

Stevenage is the first area within Hertfordshire to receive significant investment under the Government's Building Schools for the Future programme. As part of this programme, secondary provision across the town is being transformed to provide schools for the 21<sup>st</sup> century in buildings which are able to deliver the area's educational vision.

As part of these plans, statutory decisions were taken to increase admission numbers at some schools from 2011/12.

2011/12: to align admission numbers more closely with the programme of school building works and the forecast of demand for places in the town the County Council is consulting on proposals to lower the admission numbers previously approved for the following schools:

- Marriotts School from 240 to 210
- Barclay School from 240 to 196
- Thomas Alleyne School from 240 to 180.

## Next steps

PANs will be increased in line with forecasts and the progress of school building projects.

## Tring

**Total number of Year 7 places currently available: 240**

Forecast	2010/ 2011	2011/ 2012	2012/ 2013	2013/ 2014	2014/ 2015	2015/ 2016	2016/ 2017	2020/ 2021
% surplus/ shortage	-3.33%	-2.08%	1.67%	-6.25%	2.08%	-5.83%	-5.83%	-7.92%
Demand	248	245	236	255	235	254	254	259

There is only one 8 f.e. secondary school in Tring. There is a small deficit of places forecast for the town.

## Action taken

2004: Tring Secondary School PAN increased from 232 to 240 places

## Next steps

There is no further increase of places proposed based on the current forecast up to 2015/16. The school attracts from a wide area, including

Berkhamsted and out of county. Current capacity should be sufficient to provide places for local children. Pupil numbers will continue to be monitored and any excess demand from local children will be managed locally.

## **Watford**

**Total number of Year 7 places currently available: 1,134**

<b>Forecast</b>	<b>2010/ 2011</b>	<b>2011/ 2012</b>	<b>2012/ 2013</b>	<b>2013/ 2014</b>	<b>2014/ 2015</b>	<b>2015/ 2016</b>	<b>2016/ 2017</b>	<b>2020/ 2021</b>
<b>% surplus/ shortage</b>	2.20%	-0.26%	-1.15%	1.68%	-3.00%	-6.44%	-8.29%	-15.96%
<b>Demand</b>	1109	1137	1147	1115	1168	1207	1228	1315

A shortage of school places is forecast from 2011/12. There is a relationship between Watford and Rickmansworth as parts of those areas are geographically close (see Rickmansworth above). There is also a relationship between Watford and Bushey, in which there are currently 72 places available. The planning of school places is therefore complex across all three areas. It is anticipated that, together with some surplus places to allow for parental satisfaction, 12 f.e. (360 places) will be required up to 2021 across Watford and Rickmansworth.

### **Action taken**

2006: Westfield Community College PAN increased from 180 to 210.

2009 Bushey Hall School closed to become Bushey Academy. Its PAN was reduced from 240 to 210 from 2009

2011/12: To respond to the growing demand the County Council is consulting on the following proposal:

- Westfield Community College's PAN increasing from 211 to 240.

### **Next steps**

Feasibility work is required to ascertain the most appropriate long term solution to create the required additional capacity across Watford and Rickmansworth. This could be through establishing new provision, the expansion of existing schools, or a combination of both.