

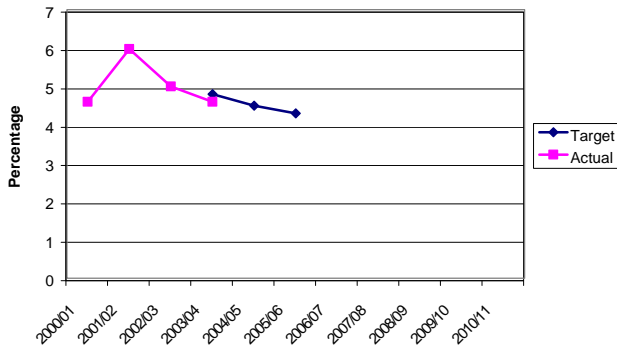
APR Core Indicators Pro-Forma - Annex A

Select your LA from the drop down list (Click in yellow box and use the drop down arrow). Hertfordshire

Core Indicator	Definitions	Year	Value	Year Type (Enter C for Calendar Year and F for Financial Year)	Actual and Trajectory Data												Is your LA on track to meet its target for this core indicator?	Please indicate if your reported or target figures have changed since you previously reported.	Please outline the methodology and source of data used to calculate your figures. Also include any other relevant information.	
					Year	2000/01	2001/02	2002/03	2003/04	2004/05	2005/06	2006/07	2007/08	2008/09	2009/10	2010/11				
Road Condition (% where structural maintenance should be considered)	(1) principal roads - BV96	Base Data	1999	4.78	F	Year												Yes	No Change.	National Road Maintenance Condition Survey information and deflectograph survey information on HCC HERMIS system. Trajectories can not be provided before 2003/04 as the method of calculating the actual data has changed.
		Target Data	2005	4.3		Actual Figures	4.60%	5.97%	5.00%	4.60%										
		Units		%		Trajectories			4.80%	4.50%	4.30%									
	(2) non-principal roads - BV97a	Base Data	2003	10.5	F	Year												No Clear Evidence	The rules and parameters of the indicator were reviewed and changed in 2002/03, so there is a new baseline for 2003/04 and a new target for 2006. Therefore there are no actual results before 2003/04.	National Road Maintenance Condition Survey information and deflectograph survey information on HCC HERMIS system. Trajectories can not be provided before 2003/04 as the method of calculating the actual data has changed.
		Target Data	2006	11		Actual Figures			10.50%											
		Units		%		Trajectories			11%	11%	11%	11%								
	(3) unclassified roads BV97b	Base Data	2003	12.2	F	Year												No Clear Evidence	The rules and parameters of the indicator were reviewed and changed in 2002/03, so there is a new baseline for 2003/04 and a new target for 2006. Therefore there are no actual results before 2003/04.	National Road Maintenance Condition Survey information and deflectograph survey information on HCC HERMIS system. Trajectories can not be provided before 2003/04 as the method of calculating the actual data has changed.
		Target Data	2006	12		Actual Figures			12.20%											
		Units		%		Trajectories			12%	12%	12%	12%								
Number of bus passenger journeys	Thousands of bus passenger journeys (i.e. boardings) per year in the authority - BV102	Base Data	2001	33	F	Year											No	No Change.	Information based on ticket sales supplied by bus operators.	
		Target Data	2005	33.9		Actual Figures		33	32	31.1										
		Units		Million		Trajectories		33	32.8	32.6	33.2	33.9								
Bus passenger satisfaction	Percentage of bus users satisfied with local bus services - BV104u	Base Data	2000	38	F	Year											Yes	No Change.	Triennial public satisfaction survey based on a random sample of 3200 Hertfordshire residents from the electoral register. The County Council is reviewing the actual data as the survey may have been done incorrectly, therefore a stretched target has not yet been set.	
		Target Data	2006	50		Actual Figures	38%		55%											
		Units		%		Trajectories	38%		45%			50%								

Core Indicator	Definitions	Year	Value	Year Type (Enter C for Calendar Year and F for Financial Year)	Actual and Trajectory Data												Is your LA on track to meet its target for this core indicator?	Please indicate if your reported or target figures have changed since you previously reported.	Please outline the methodology and source of data used to calculate your figures. Also include any other relevant information.	
					Year	2000/01	2001/02	2002/03	2003/04	2004/05	2005/06	2006/07	2007/08	2008/09	2009/10	2010/11				
Number of cycling trips	Number of cycling trips across the authority	Base Data			F	Year											No Clear Evidence	This indicator has been reviewed as it was not on track to meet its target. Data collection methods are being reviewed and a new target has been agreed to increase cycling from a 2004 base level by 20% by 2016. There was no actual data available at the time of publication of this proforma.	Not yet known as methodology and source of data are being reviewed.	
		Target Data	2004-2016	20% increase by 2016		Actual Figures														
		Units				Trajectories														
Number of deaths and serious injuries (all ages)	Number of people killed or seriously injured on roads in the authority	Base Data	94-'98 Ave	1084	C	Year	2000	2001	2002	2003	2004	2005	2006	2007	2008	2009	2010	Yes	The trajectories now show the three year stretched LPSA targets of 703 by the end of 2005, from the original target of 867.	HCC Road Safety Plan Review - Original source data: casualty data provided by Police.
		Target Data	2010	650		Actual Figures	912	894	814	584										
		Units		Absolute		Trajectories	1011	976	940	903	715	703	690	680	670	660	650			
Number of children killed and seriously injured	Number of children (aged less than 16) killed or seriously injured in the authority	Base Data	94-'98 Ave	113	C	Year	2000	2001	2002	2003	2004	2005	2006	2007	2008	2009	2010	Yes	The trajectories now show the three year stretched LPSA targets of 77 by the end of 2005, from the original target of 80.	HCC Road Safety Plan Review - Original source data: casualty data provided by Police
		Target Data	2010	56		Actual Figures	91	76	73	68										
		Units		Absolute		Trajectories	103	99	95	89	82	77	71	65	59	54	48			
Light rail passenger journeys	Thousands of light rail passengers per year	Base Data				Year													Not Applicable.	HCC do not have any light rail systems in the county.
		Target Data				Actual Figures														
		Units				Trajectories														
% of rural households within 13 minutes walk of an hourly or better bus service	% of rural households within 800 metres of an hourly or better bus service	Base Data	2001	36	F	Year	2000/01	2001/02	2002/03	2003/04	2004/05	2005/06	2006/07	2007/08	2008/09	2009/10	2010/11	Yes	This indicator needs a stretched target (which will be reviewed in conjunction with accessibility planning work as part of LTP2), therefore trajectories have not been provided.	HCC Passenger Transport Unit - using a Geographic Information System (GIS)
		Target Data	2005	40		Actual Figures		36%	51%	63.2%										
		Units		%		Trajectories		36%	37%	38%	39%	40%								

Road Condition (BV96) - Trend Information

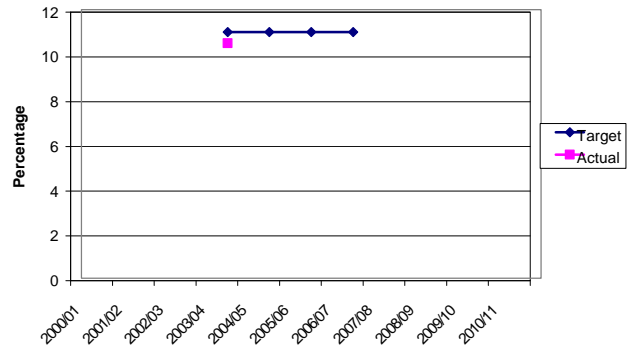


Target: 4.3% by 2005

Classification: On Track

The chart shows that there has been a steady decrease in the percentage of principal roads where structural maintenance should be considered since 2001/02. For 2003/04, the actual data has met the target, and so the County Council are confident that 4.3% by 2005 will be achieved.

Road Condition (BV97a) - Trend Information

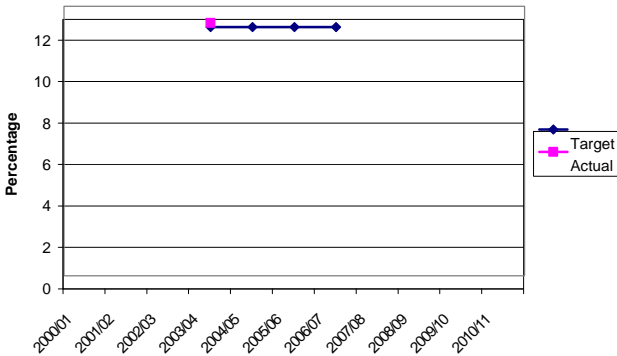


Target: 11% by 2006

Classification: No Clear Evidence

There is no clear evidence on whether this indicator is on track to meet its new target of 11% by 2006. The rules and parameters were changed in 2002/03, and the new baseline is 2003/04, therefore no trend is available.

Road Condition (BV97b) - Trend Information

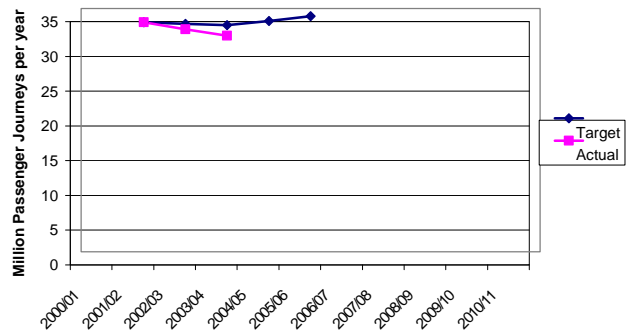


Target: 12% by 2006

Classification: No Clear Evidence

There is no clear evidence on whether this indicator is on track to meet its new target of 12% by 2006. The rules and parameters were changed in 2002/03, and the new baseline is 2003/04, therefore no trend is available.

Number of Bus Passenger Journeys (BV102) - Trend Information

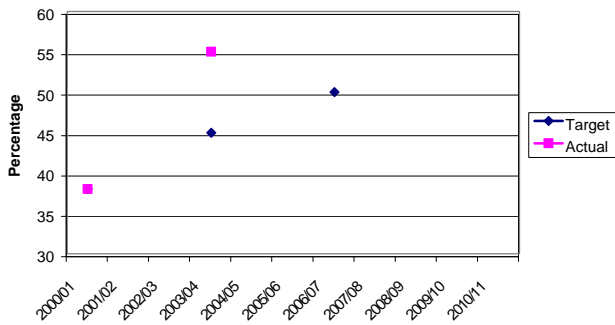


Target: 33.9 million by 2005

Classification: Not on Track

The County Council was expecting a slight dip in passenger journeys for 2003/04 but it would then increase again up to the target date of 2005/06, this is expressed in the trajectory data. The actual data however did not meet the 2003/04 target and so the indicator has been classified as 'not on track'.

Bus Passenger Satisfaction (BV104) - Trend Information

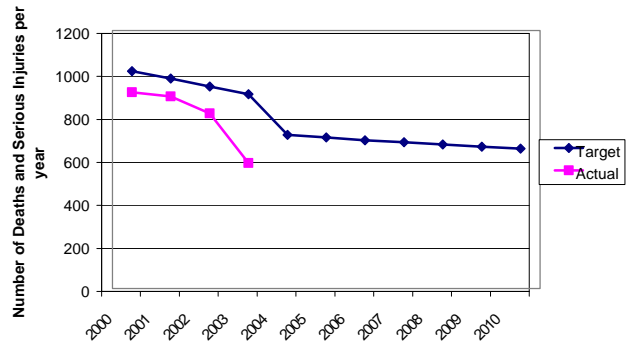


Target: 50% by 2006

Classification: On track

This indicator has exceeded its target of 45% by 2003/04 and so is expected to meet the target of 50% by 2006/07. However, the actual data for 2003/04 is being reviewed before a stretched target is applied, as there may be an issue with the methodology of the survey and how it was interpreted.

Number of Deaths and Serious Injuries (All Ages) - Trend Information

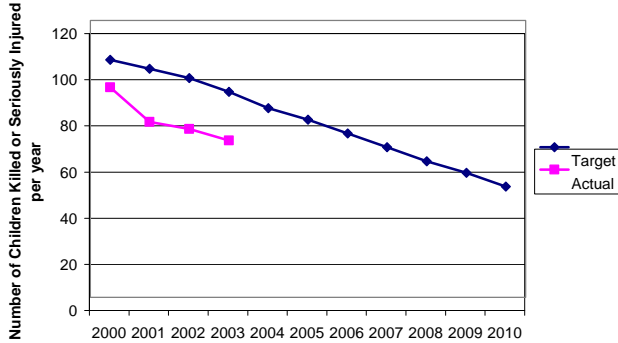


Target: 650 by 2010

Classification: On Track

The graph shows that the actual data has been consistently on track since 2000. Stretched LPSA targets have been applied for 2003 - 2005, and based on the trend line for 2000 - 2003 these new stretched targets are expected to be met.

Number of Children Killed and Seriously Injured - Trend Information

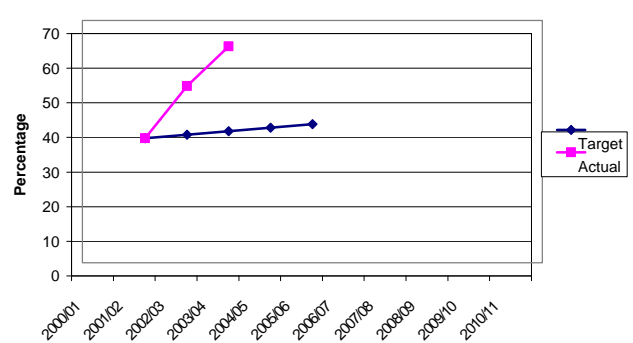


Target: 48 by 2010

Classification: On Track

The graph shows that the actual data has been consistently on track since 2000. Stretched LPSA targets have been applied for 2003 - 2005, and based on the trend line for 2000 - 2003 these new stretched targets are expected to be met.

% of Rural Households within 13 minutes Walk of an Hourly or Better Bus Service - Trend Information



Target: 40% by 2005/06

Classification: On Track

The actual data has exceeded the target since 2002/03, therefore the indicator is expected to stay on track up to 2005/06. This indicator will be reviewed when the accessibility planning work is done for LTP2, and so a stretched target has not yet been set.