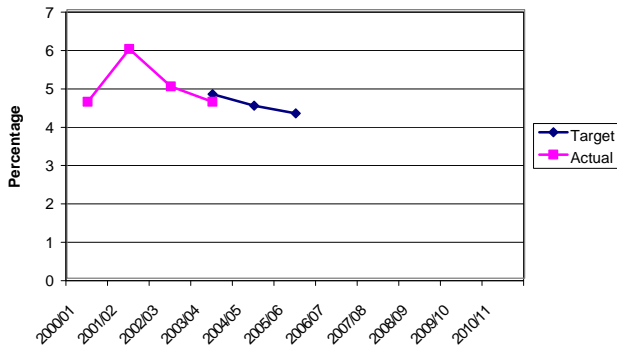


Road Condition (BV96) - Trend Information

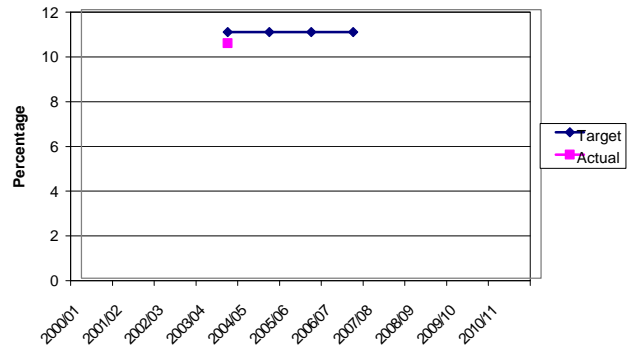


Target: 4.3% by 2005

Classification: On Track

The chart shows that there has been a steady decrease in the percentage of principal roads where structural maintenance should be considered since 2001/02. For 2003/04, the actual data has met the target, and so the County Council are confident that 4.3% by 2005 will be achieved.

Road Condition (BV97a) - Trend Information

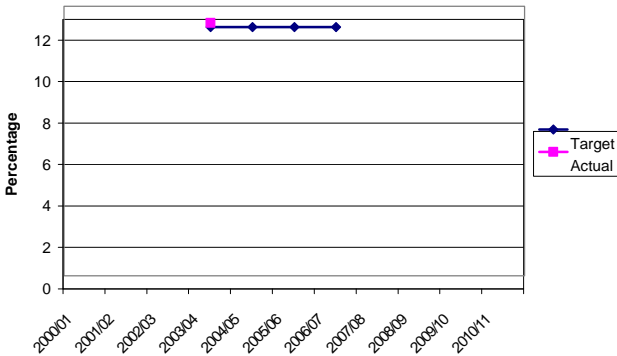


Target: 11% by 2006

Classification: No Clear Evidence

There is no clear evidence on whether this indicator is on track to meet its new target of 11% by 2006. The rules and parameters were changed in 2002/03, and the new baseline is 2003/04, therefore no trend is available.

Road Condition (BV97b) - Trend Information

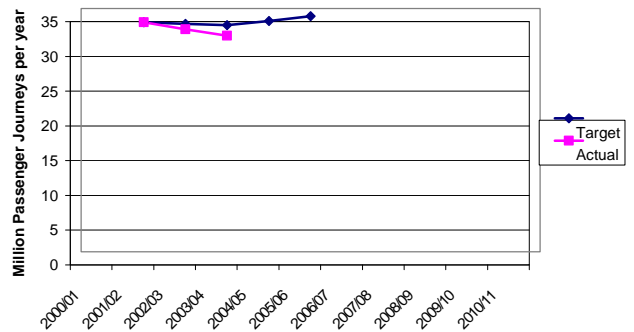


Target: 12% by 2006

Classification: No Clear Evidence

There is no clear evidence on whether this indicator is on track to meet its new target of 12% by 2006. The rules and parameters were changed in 2002/03, and the new baseline is 2003/04, therefore no trend is available.

Number of Bus Passenger Journeys (BV102) - Trend Information

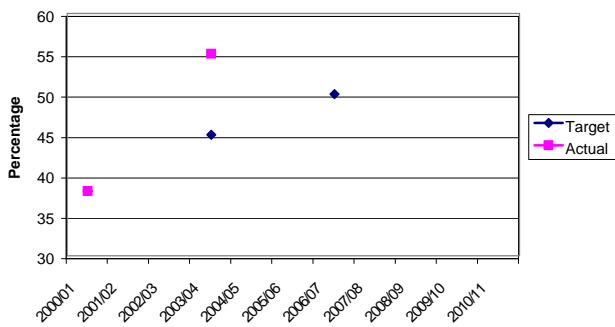


Target: 33.9 million by 2005

Classification: Not on Track

The County Council was expecting a slight dip in passenger journeys for 2003/04 but it would then increase again up to the target date of 2005/06, this is expressed in the trajectory data. The actual data however did not meet the 2003/04 target and so the indicator has been classified as 'not on track'.

Bus Passenger Satisfaction (BV104) - Trend Information

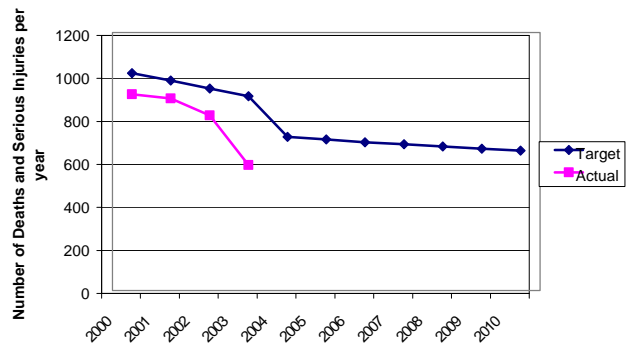


Target: 50% by 2006

Classification: On track

This indicator has exceeded its target of 45% by 2003/04 and so is expected to meet the target of 50% by 2006/07. However, the actual data for 2003/04 is being reviewed before a stretched target is applied, as there may be an issue with the methodology of the survey and how it was interpreted.

Number of Deaths and Serious Injuries (All Ages) - Trend Information

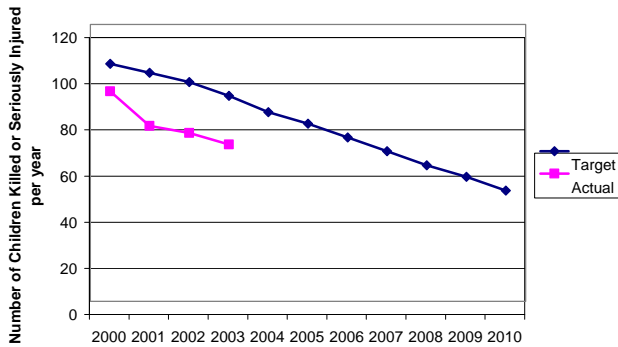


Target: 650 by 2010

Classification: On Track

The graph shows that the actual data has been consistently on track since 2000. Stretched LPSA targets have been applied for 2003 - 2005, and based on the trend line for 2000 - 2003 these new stretched targets are expected to be met.

Number of Children Killed and Seriously Injured - Trend Information

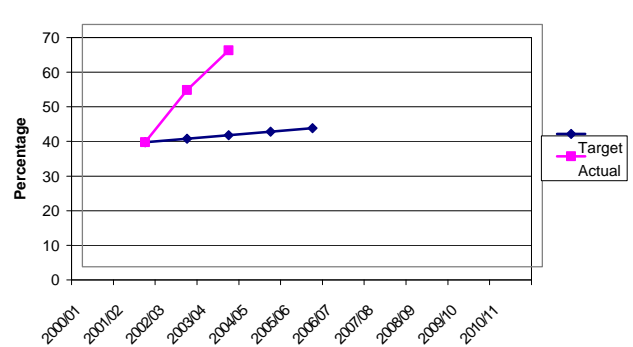


Target: 48 by 2010

Classification: On Track

The graph shows that the actual data has been consistently on track since 2000. Stretched LPSA targets have been applied for 2003 - 2005, and based on the trend line for 2000 - 2003 these new stretched targets are expected to be met.

% of Rural Households within 13 minutes Walk of an Hourly or Better Bus Service - Trend Information



Target: 40% by 2005/06

Classification: On Track

The actual data has exceeded the target since 2002/03, therefore the indicator is expected to stay on track up to 2005/06. This indicator will be reviewed when the accessibility planning work is done for LTP2, and so a stretched target has not yet been set.