

Adoption Support Service

Supporting People
Affected by Adoption



Children, Schools & Families
01438 737500
www.hertsdirect.org/csf



We believe that providing post-placement support is an essential part of successful adoptions.

For some families we offer advice and assistance on an individual basis, but we also promote links between families through groups, training and social events.

We aim to provide easy access to information and advice for adopters, adoptees and birth families affected by adoption.

❖ Who is the Service for?

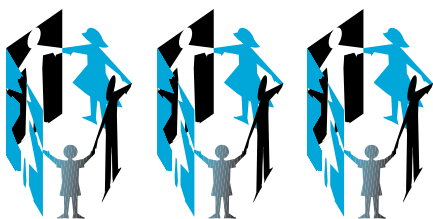
- ❖ All Hertfordshire adopters and their children.
- ❖ Residents of Hertfordshire who have been affected by domestic and inter-country adoption.
- ❖ Adopted people over the age of 18 who are seeking information about their origins through access to their birth records.

❖ How to use the Service?

- ❖ You can contact the Adoption Support Service on 01707 897654.
- ❖ If you are already in contact with a social worker you may wish to access the Service through them.

❖ What we can offer?

- ❖ Information and advice on a wide range of adoption issues
- ❖ Regular training events
- ❖ Support groups
- ❖ Access to an independent service providing support for children, adopters and birth families
- ❖ An annual summer picnic for adoptive families and their children
- ❖ Letterbox Exchange Service, co-ordinating the regular exchange of information between birth families and adopters
- ❖ Help with direct contact arrangements
- ❖ Counselling to adopted people over the age of 18 who wish to have access to their adoption records
- ❖ Counselling and information to birth relatives.



This information is available
on request in: Large print,
computer disk, audio tape
and other languages.

More information
on the services we provide
is available on the
county council's website

Adoption Support Team,
Old Parkway School, Parkway
Welwyn Garden City AL8 6JD
Tel: 01707 897654
Answerphone: 01707 897632
www.hertsdirect.org/adoption

www.hertsdirect.org/csf

OPER 3825

January 2003