

Annex B

Primary Schools - FSM element per pupil / IDACI scores per pupil - excluding Nursery

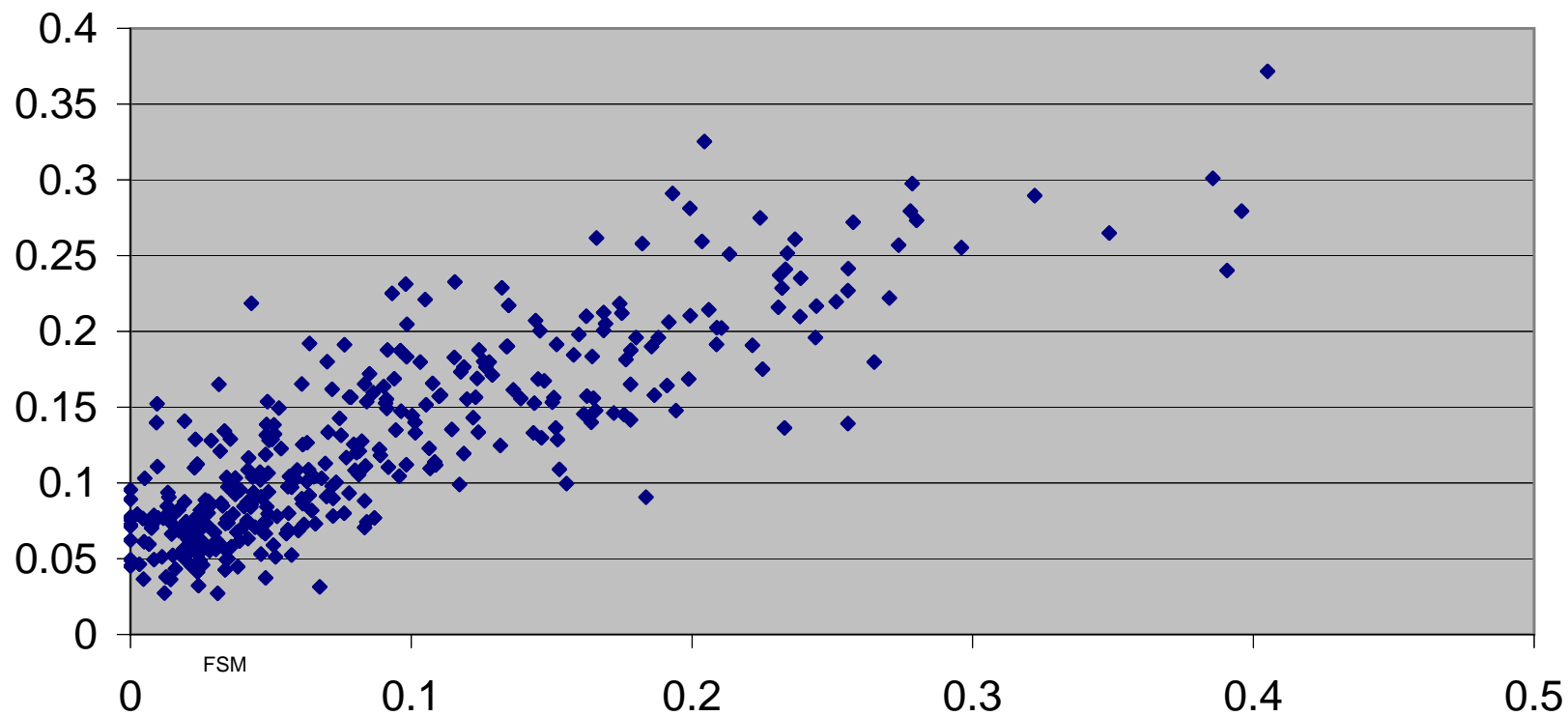
School No	Estab	SchoolName	KS 2 AVERAGE POINTS 2007	FSM Entitlement per Pupil - Not Nursery	IDACI score per Pupil - Not Nursery
493	2457	Wood End School	30.3	0.01	0.03
929	3380	St Bartholomew's C of E VA Primary School	30.8	0.07	0.03
687	5201	Christ Church Church of England School	30.9	0.00	0.04
925	3000	Aldbury Church of England Primary School	31	0.05	0.04
494	3401	St Dominic Roman Catholic Primary School	29.7	0.00	0.05
227	3986	Summercroft Primary School	28.7	0.06	0.05
326	2145	Widford School	31	0.00	0.06
789	2378	Newberries Primary School	29.9	0.05	0.06
312	3424	Sacred Heart Roman Catholic Primary School	28.8	0.00	0.07
215	2327	Thorn Grove Primary School	27.1	0.08	0.07
192	3306	Ardeley St Lawrence C of E VA Primary School	31	0.00	0.08
229	3303	Albury Church of England Voluntary Aided Primary School	27.6	0.09	0.08
438	2364	Maple School	30.5	0.00	0.09
263	3008	Tonwell St Mary's C of E Primary School	26.3	0.18	0.09
56	2053	Hexton JMI School	28.3	0.00	0.10
839	2185	Chaulden Junior School	25.7	0.16	0.10
606	5213	Clore Shalom School	30.1	0.01	0.11
198	2114	Walkern Primary School	22.7	0.15	0.11
853	3054	Leverstock Green C of E Primary School	28.7	0.03	0.12
484	2412	The Lea Primary School	26.8	0.13	0.12
287	3345	St Augustine's Catholic Primary School	29.9	0.02	0.13
543	2446	Watchlytes School	28.7	0.15	0.13
196	3018	Graveley Primary School	29.6	0.01	0.14
560	3015	Essendon C of E Primary School	28.5	0.26	0.14
64	3358	Cockernhoe Endowed C of E Primary School	31	0.01	0.15
209	3979	Windhill Primary School	27	0.19	0.15
373	3423	St Paul's Catholic Primary School	28.8	0.07	0.16
752	3981	Alban Wood Primary and Nursery School	25.8	0.19	0.16
140	3977	St Vincent de Paul RC Primary School	28.2	0.03	0.17

861	2422 Lime Walk Primary School	26.3	0.20	0.17
582	3388 St Philip Howard Catholic Primary School	29.1	0.07	0.18
581	3982 De Havilland Primary School	28.9	0.26	0.18
120	3369 St Nicholas C of E Primary School & Nursery	29.8	0.06	0.19
309	2323 Tower Primary School	27.1	0.22	0.19
570	3406 Countess Anne VA C of E Primary School	28.1	0.10	0.20
725	2116 Central Primary School	24.6	0.24	0.20
527	3382 Our Lady Catholic Primary School	28.8	0.14	0.21
123	2110 Fairlands Primary School and Nursery	26.2	0.24	0.21
623	3384 St Teresa's Catholic Primary School	28.6	0.04	0.22
753	2020 Beechfield School	26.5	0.27	0.22
159	2381 Giles Junior School	27.2	0.09	0.23
871	2439 Jupiter Drive JMI School	27.8	0.26	0.23
525	2027 Swallow Dell Primary School	25.9	0.23	0.24
865	2458 Eastbrook Primary School	25.5	0.39	0.24
615	2030 Cowley Hill Primary School	25.3	0.21	0.25
367	2289 Downfield JMI School	27	0.23	0.25
616	2153 Woodlands School	26.8	0.17	0.26
28	2449 Lannock Primary School	24.5	0.35	0.26
870	2438 Barncroft Primary School	28.9	0.22	0.27
429	2099 Mandeville Primary School	26.7	0.28	0.27
353	2151 Hurst Drive Primary School	28.2	0.20	0.28
523	2140 Peartree Primary School	25.7	0.40	0.28
125	2169 Broom Barns JMI School	29.2	0.19	0.29
127	2188 Bedwell Primary School & Nursery	28.8	0.32	0.29
375	2411 Longlands Primary School and Nursery	25.2	0.28	0.30
852	2999 Bellgate Primary School	26.9	0.39	0.30

Correlation: 0.840

Primary Schools - Excluding Nursery FSM Entitlement per Pupil/IDACI Scores per Pupil

IDACI



Primary Schools -IDACI scores per pupil / FSM element per pupil - excluding Nursery

School No	Estab	SchoolName	KS 2 AVERAGE POINTS 2007	IDACI score per Pupil - Excluding Nursery	FSM Entitlement per Pupil - Excluding Nursery
687	5201	Christ Church Church of England School	30.9	0.04	0.00
56	2053	Hexton JMI School	28.3	0.10	0.00
493	2457	Wood End School	30.3	0.03	0.01
64	3358	Cockernhoe Endowed C of E Primary School	31	0.15	0.01
51	2002	Ashwell Primary School	29.9	0.03	0.02
26	3400	St Thomas More Catholic Primary School	30.2	0.14	0.02
218	2998	Manor Fields Primary School	29.9	0.03	0.03
140	3977	St Vincent de Paul RC Primary School	28.2	0.17	0.03
694	2082	Harvey Road Primary School	31.10	0.04	0.04
623	3384	St Teresa's Catholic Primary School	28.60	0.22	0.04
925	3000	Aldbury Church of England Primary School	31.00	0.04	0.05
149	3397	St Margaret Clitherow RC Primary School	30.40	0.15	0.05
227	3986	Summercroft Primary School	28.70	0.05	0.06
120	3369	St Nicholas C of E Primary School & Nursery	29.80	0.19	0.06
929	3380	St Bartholomew's C of E VA Primary School	30.80	0.03	0.07
582	3388	St Philip Howard Catholic Primary School	29.10	0.18	0.07
223	3038	Spellbrook Primary School	29.30	0.07	0.08
352	3326	Holy Trinity Church of England Primary School	28.80	0.19	0.08
229	3303	Albury Church of England Voluntary Aided Primary School	27.60	0.08	0.09
159	2381	Giles Junior School	27.20	0.23	0.09
416	2100	Bernards Heath Junior School	28.80	0.10	0.10
773	2177	Greenfields Primary School	27.10	0.23	0.10
565	3976	St Mary's Church of England Primary School	27.00	0.11	0.11
659	2006	Sunny Bank Primary School	27.80	0.17	0.11
940	2343	Dundale Primary School & Nursery	28.20	0.10	0.12
775	3383	St Joseph's Catholic Primary School	29.00	0.23	0.12
484	2412	The Lea Primary School	26.80	0.12	0.13
862	2337	Hammond JMI & Nursery School	29.50	0.23	0.13
21	2068	Grange JM School	28.00	0.13	0.14
527	3382	Our Lady Catholic Primary School	28.80	0.21	0.14

198	2114 Walkern Primary School	22.70	0.11	0.15
129	2024 Roebuck Primary School	28.30	0.20	0.15
839	2185 Chaulden Junior School	25.70	0.10	0.16
739	3980 Berrygrove Primary and Nursery School	26.80	0.21	0.16
288	2314 Westfield Community Primary School	27.80	0.15	0.17
616	2153 Woodlands School	26.80	0.26	0.17
263	3008 Tonwell St Mary's C of E Primary School	26.30	0.09	0.18
43	2026 Oughton Primary and Nursery School	26.60	0.26	0.18
209	3979 Windhill Primary School	27.00	0.15	0.19
125	2169 Broom Barns JMI School	29.20	0.29	0.19
861	2422 Lime Walk Primary School	26.30	0.17	0.20
621	5202 Parkside Community Primary School	28.80	0.33	0.20
722	2398 The Laurance Haines Primary & Nursery School	27.40	0.19	0.21
615	2030 Cowley Hill Primary School	25.30	0.25	0.21
309	2323 Tower Primary School	27.10	0.19	0.22
870	2438 Barncroft Primary School	28.90	0.27	0.22
845	2259 Martindale Primary and Nursery School	29.30	0.14	0.23
367	2289 Downfield JMI School	27.00	0.25	0.23
725	2116 Central Primary School	24.60	0.20	0.24
618	2156 Meryfield Community Primary School	25.10	0.26	0.24
560	3015 Essendon C of E Primary School	28.50	0.14	0.26
772	2135 Warren Dell Primary School	22.60	0.27	0.26
753	2020 Beechfield School	26.50	0.22	0.27
520	2143 Holwell Primary School	27.80	0.26	0.27
429	2099 Mandeville Primary School	26.70	0.27	0.28
375	2411 Longlands Primary School and Nursery	25.20	0.30	0.28
865	2458 Eastbrook Primary School	25.50	0.24	0.39
852	2999 Bellgate Primary School	26.90	0.30	0.39

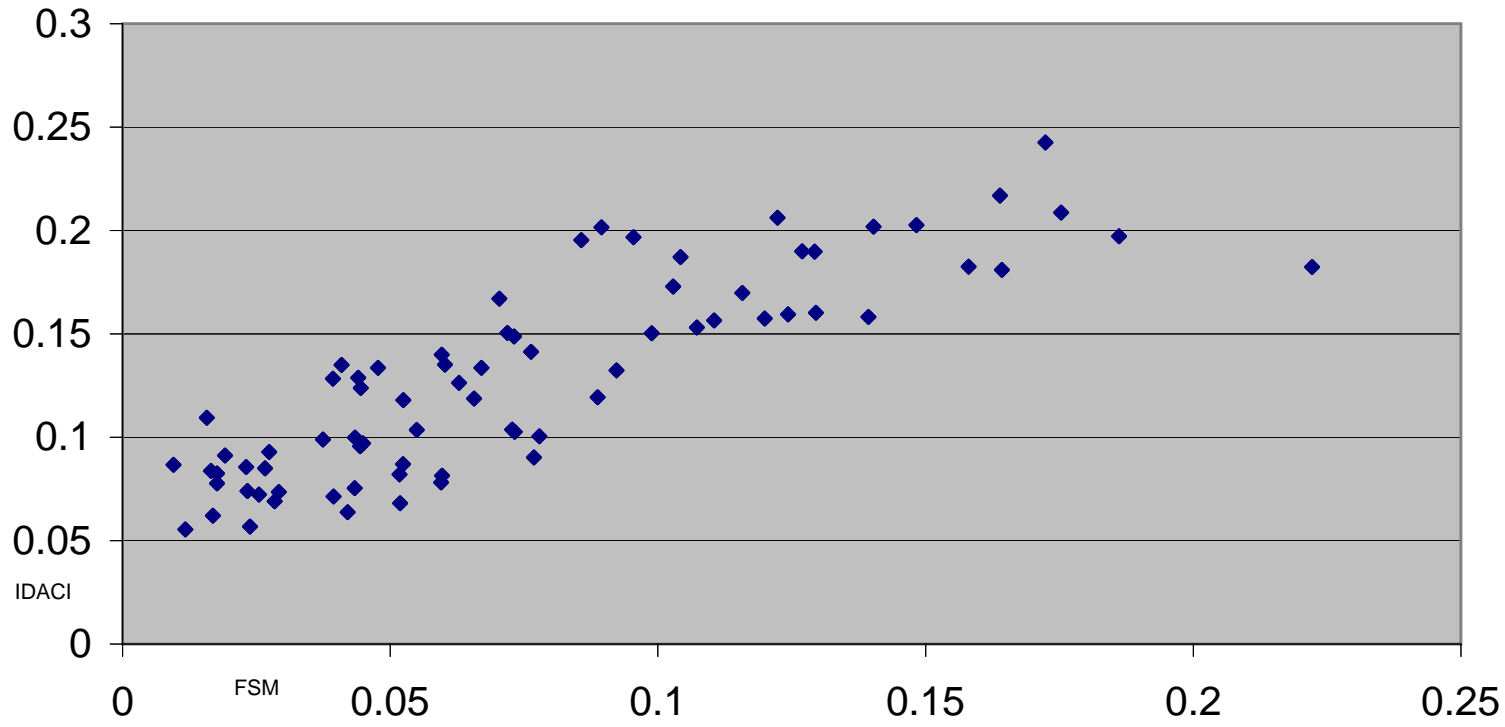
Annex C

Secondary Schools - FSM element per pupil / IDACI scores per pupil excluding sixth form

School No	Estab	SchoolName	KS 3 AVERAGE POINTS 2007	FSM Entitlement per Pupil - Excluding 6th Form	IDACI score per Pupil - Excluding 6th Form
203	5405	The Bishop's Stortford High School	39.6	0.01	0.06
935	4504	Tring School	36.5	0.04	0.06
480	4614	St George's School	40.8	0.02	0.07
482	4070	Roundwood Park School	38.8	0.05	0.07
711	5403	Watford Grammar School for Girls	42.9	0.02	0.08
246	4067	Simon Balle School	37.2	0.06	0.08
220	5416	The Leventhorpe School	37.7	0.01	0.09
801	4005	The Hemel Hempstead School	36.4	0.08	0.09
401	4011	Verulam School	37.8	0.04	0.10
1	4016	The Knights Templar School	37.9	0.08	0.10
275	4101	The Broxbourne School	36.2	0.04	0.12
516	4118	Monk's Walk School	36.3	0.09	0.12
704	5418	St Joan of Arc Roman Catholic School	36.9	0.04	0.13
409	5414	Marlborough School	36.3	0.09	0.13
105	5413	The John Henry Newman RC School	38.4	0.04	0.14
13	4122	The Highfield School	36.1	0.08	0.14
103	4104	The Nobel School	36.6	0.07	0.15
803	4100	The Cavendish School	33.4	0.11	0.15
247	4117	The Sele School	33.1	0.11	0.16
510	4014	Stanborough School	35.8	0.14	0.16
444	5412	Nicholas Breakspear RC School	35.7	0.07	0.17
10	4010	Fearnhill School Maths and Computing College	35	0.12	0.17
717	4111	Westfield Community Technology College	30.2	0.16	0.18
403	5402	Francis Bacon School	27.6	0.22	0.18
108	4066	Barnwell Business & Enterprise School	33.8	0.10	0.19
345	4105	Turnford School	30	0.13	0.19
101	4201	The Thomas Alleyne School	34.1	0.09	0.20
718	4075	Francis Combe School and Community College	32.3	0.19	0.20
112	4116	Marriotts School	32.6	0.12	0.21
812	4029	Adeyfield School	32.9	0.18	0.21

Correlation: 0.849

Secondary Schools - (Excluding 6th Form) FSM Entitlement per pupil/IDACI scores per pupil



Secondary Schools -IDACI scores per pupil excluding sixth form/ FSM element per pupil

School No	Estab	SchoolName	KS 3 AVERAGE POINTS 2007	IDACI score per Pupil - Excluding 6th Form	FSM Entitlement per Pupil - Excluding 6th Form
203	5405	The Bishop's Stortford High School	39.60	0.06	0.01
220	5416	The Leventhorpe School	37.70	0.09	0.01
201	5420	The Hertfordshire and Essex High School	39.40	0.06	0.02
653	5407	Dame Alice Owen's School	41.80	0.11	0.02
228	4141	Freman College	37.30	0.07	0.03
30	4008	Hitchin Boys' School	37.60	0.09	0.03
935	4504	Tring School	36.50	0.06	0.04
105	5413	The John Henry Newman RC School	38.40	0.14	0.04
482	4070	Roundwood Park School	38.80	0.07	0.05
404	4620	Loreto College	39.30	0.13	0.05
204	4200	Birchwood High School	35.80	0.08	0.06
814	4619	John F Kennedy Roman Catholic School	39.50	0.14	0.06
303	4498	The Chauncy School	35.50	0.10	0.07
444	5412	Nicholas Breakspear RC School	35.70	0.17	0.07
801	4005	The Hemel Hempstead School	36.40	0.09	0.08
13	4122	The Highfield School	36.10	0.14	0.08
516	4118	Monk's Walk School	36.30	0.12	0.09
671	5409	Bushey Hall School	31.40	0.20	0.09
33	4000	The Priory School	34.60	0.15	0.10
106	4047	The Barclay School	34.90	0.20	0.10
803	4100	The Cavendish School	33.40	0.15	0.11
247	4117	The Sele School	33.10	0.16	0.11
276	4137	Sheredes School	32.00	0.16	0.12
112	4116	Marriotts School	32.60	0.21	0.12
802	4080	Longdean School	34.70	0.16	0.13
554	4154	Onslow St Audrey's School	28.50	0.19	0.13
510	4014	Stanborough School	35.80	0.16	0.14
344	5423	St Mary's C of E Voluntary Aided High School	33.00	0.20	0.14
651	5411	Mount Grace School	34.20	0.18	0.16
804	4499	The Astley Cooper School	33.60	0.22	0.16