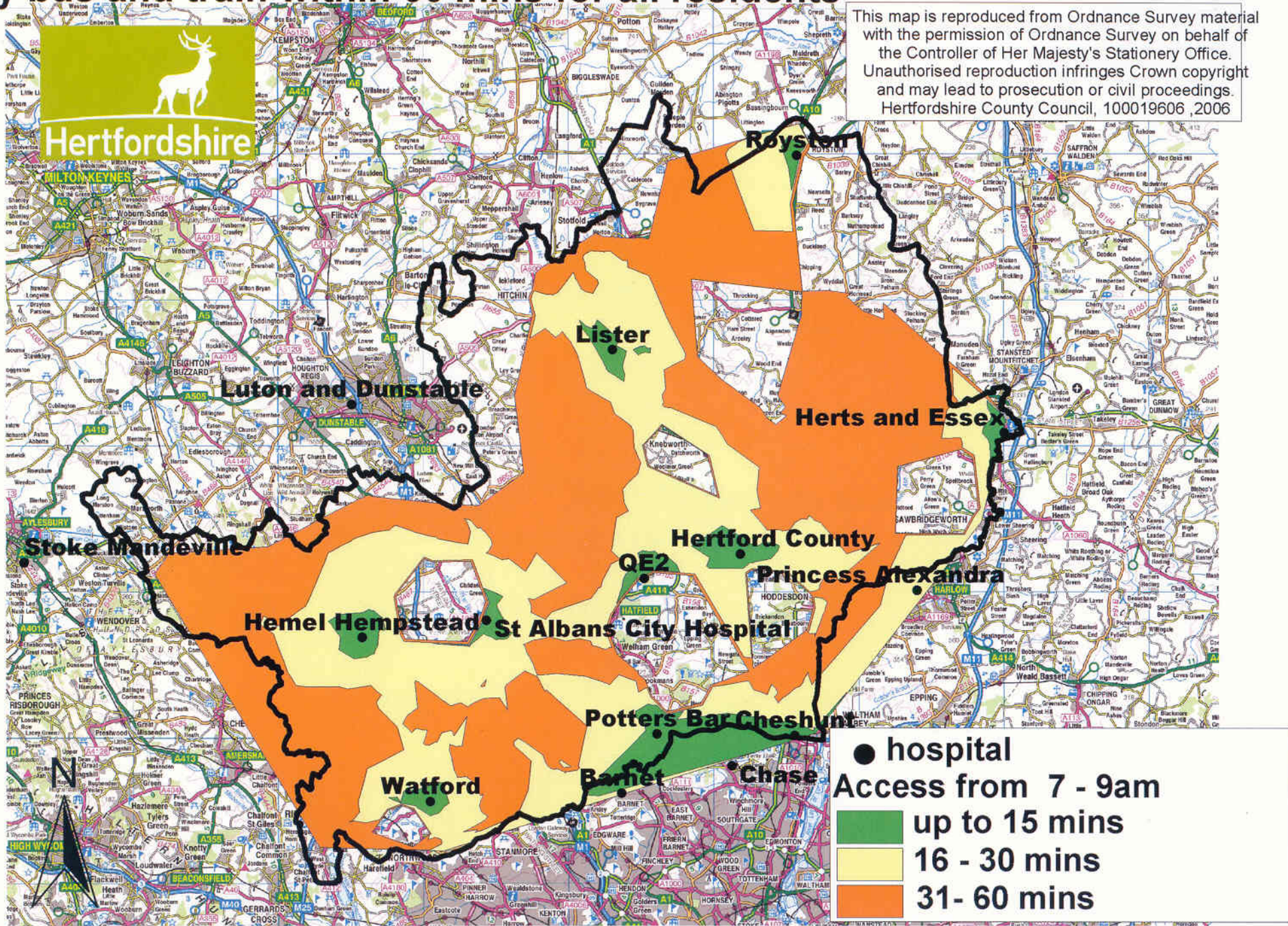


# Access to community & diagnostic hospital by bus and train within 60 mins for all residents



This map is reproduced from Ordnance Survey material with the permission of Ordnance Survey on behalf of the Controller of Her Majesty's Stationery Office. Unauthorised reproduction infringes Crown copyright and may lead to prosecution or civil proceedings. Hertfordshire County Council, 100019606 ,2006

● hospital  
 Access from 7 - 9am  
 up to 15 mins  
 16 - 30 mins  
 31- 60 mins